

HITSP Clinical Referral Request Transport Transaction

HITSP/T67



Healthcare Information Technology Standards Panel

Submitted to:

Healthcare Information Technology Standards Panel

Submitted by:

**Security, Privacy and Infrastructure Domain Technical Committee
(Formerly Security and Privacy Technical Committee)**



DOCUMENT CHANGE HISTORY

Version Number	Description of Change	Name of Author	Date Published
	Template V2.4	Project Team	July 31, 2008
0.0.1	Review Copy	Security, Privacy and Infrastructure Domain Technical Committee	September 26, 2008
0.0.2	Review Copy	Security, Privacy and Infrastructure Domain Technical Committee	December 10, 2008
1.0	Released for Implementation	Security, Privacy and Infrastructure Domain Technical Committee	December 18, 2008
	Template V2.5	Security, Privacy and Infrastructure Domain Technical Committee	June 30, 2009
1.0.1	Review Copy	Security, Privacy and Infrastructure Domain Technical Committee	June 30, 2009
1.1	Released for Implementation	Security, Privacy and Infrastructure Domain Technical Committee	July 8, 2009



TABLE OF CONTENTS

1.0	INTRODUCTION.....	5
1.1	Overview.....	5
1.2	Copyright Permissions.....	5
1.3	Reference Documents.....	5
1.4	Conformance	5
1.4.1	Conformance Criteria	5
1.4.2	Conformance Scoping, Subsetting and Options	6
2.0	TRANSACTION DEFINITION.....	7
2.1	Context Overview	7
2.1.1	Transaction Constraints.....	7
2.1.2	Interfaces.....	7
2.1.3	Interface Interactions.....	8
2.1.4	Pre-conditions.....	8
2.1.4.1	Process Triggers	8
2.1.5	Post-conditions.....	8
2.1.5.1	Required Output.....	9
2.1.6	Data Flows.....	9
2.2	List of HITSP Constructs	9
2.2.1	Construct Dependencies	9
2.2.2	Additional Constraints on Required Constructs.....	9
2.3	Standards	9
2.3.1	Regulatory Guidance.....	9
2.3.2	Selected Standards	10
2.3.3	Informative Reference Standards.....	10
3.0	DOCUMENT UPDATES	11
3.1	December 10, 2008	11
3.2	December 18, 2008	11
3.3	June 30, 2009.....	11
3.4	July 8, 2009	11



FIGURES AND TABLES

Figure 2-1 Interface Interaction	8
Table 1-1 Reference Documents	5
Table 2-1 Transaction Constraints	7
Table 2-2 Interfaces	7
Table 2-3 Interface and Transaction/Content Constraints	7
Table 2-4 Pre-conditions	8
Table 2-5 Process Triggers	8
Table 2-6 Post-conditions	9
Table 2-7 Required Output	9
Table 2-8 List of HITSP Constructs	9
Table 2-9 Construct Dependencies	9
Table 2-10 Additional Constraints on Required Constructs	9
Table 2-11 Regulatory Guidance	9
Table 2-12 Selected Standards	10
Table 2-13 Informative Reference Standards	10



1.0 INTRODUCTION

1.1 OVERVIEW

The HITSP Clinical Referral Request Transport Transaction will be used to transport the provider to provider (clinical) referral request interaction. It is based on the Integrating the Healthcare Enterprise (IHE) Document-based Referral Request (DRR) profile which is used to bundle a referral request document with other relevant clinical documents of interest and optionally to send a trigger message to the receiving provider system.

1.2 COPYRIGHT PERMISSIONS

COPYRIGHT NOTICE

© 2009 ANSI. This material may be copied without permission from ANSI only if and to the extent that the text is not altered in any fashion and ANSI's copyright is clearly noted.

1.3 REFERENCE DOCUMENTS

This section provides a list of key reference documents and background material.

A list of key reference documents and background material is provided in the table below. These documents can be retrieved from www.hitsp.org.

Table 1-1 Reference Documents

Reference Document	Document Description
HITSP Acronyms List	Lists and defines the acronyms used in this document
HITSP Glossary	Provides definitions for relevant terms used by HITSP documents
TN900 - Security and Privacy	TN900 is a reference document that provides the overall context for use of the HITSP Security and Privacy constructs

1.4 CONFORMANCE

This section describes the conformance criteria, which are objective statements of requirements that can be used to determine if a specific behavior, function, interface, or code set has been implemented correctly.

1.4.1 CONFORMANCE CRITERIA

In order to claim conformance to this construct specification, an implementation must satisfy all the requirements and mandatory statements listed in this specification, the associated HITSP Interoperability Specification, its associated construct specifications, as well as conformance criteria from the selected base and composite standards. A conformant system must also implement all of the required interfaces within the scope, subset or implementation option that is selected from the associated Interoperability Specification.

Claims of conformance may only be made for the overall HITSP Interoperability Specification or Capability with which this construct is associated.



1.4.2 CONFORMANCE SCOPING, SUBSETTING AND OPTIONS

A HITSP Interoperability Specification must be implemented in its entirety for an implementation to claim conformance to the specification. HITSP may define the permissibility for interface scoping, subsetting or implementation options by which the specification may be implemented in a limited manner. Such scoping, subsetting and options may extend to associated constructs, such as this construct. This construct must implement all requirements within the selected scope, subset or options as defined in the associated Interoperability Specification to claim conformance.



2.0 TRANSACTION DEFINITION

2.1 CONTEXT OVERVIEW

This construct will be used as the transport for the provider-to-provider (clinical) referral request interaction. It will appropriately bundle the referral request document with other relevant clinical documents of interest, and optionally send a trigger message to the receiving provider system. This construct supports document-based referrals when using document sharing (HITSP/TP13 Manage Sharing of Documents), point-to-point delivery (HITSP/T31 Document Reliable Interchange), and removable media (HITSP/T33 Transfer of Documents on Media). The selected standard is the Integrating the Healthcare Enterprise (IHE) IT Infrastructure (ITI) Technical Framework Supplement 2008 – 2009, Document-based Referral Request (DRR) profile (IHE DRR). This construct does not specify clinical content, but rather focuses on infrastructure and transport. Note that for HL7 messages, the IHE DRR profile specifies the use of the Health Level 7 (HL7) Minimal Lower Layer Protocol (MLLP).

2.1.1 TRANSACTION CONSTRAINTS

Table 2-1 Transaction Constraints

Constraint
Referral Request must be represented by a Document (content not specified here)
Used with either HITSP/TP13, HITSP/T31, or HITSP/T33

2.1.2 INTERFACES

All Interfaces for this Transaction are described further in the Integrating the IT Infrastructure Technical Framework Supplement, DRR Volume 1, Appendix A (IHE ITI-TF-2 DRR).

Table 2-2 Interfaces

Interface	Description	Used in Component/Standard	Transaction/Content	T/C Optionality ¹
Referral Dispatcher	This interface processes requests for consultation, and determines whether they can be accepted, declined, or deferred for human decision making	IHE ITI-TF-2 DRR	Request Referral	O
			Convey Printed Referral Request	R
Referral Requestor	This interface generates the request for consultations	IHE ITI-TF-2 DRR	Request Referral	O
			Convey Printed Referral Request	R

Implementation Constraints

Table 2-3 Interface and Transaction/Content Constraints

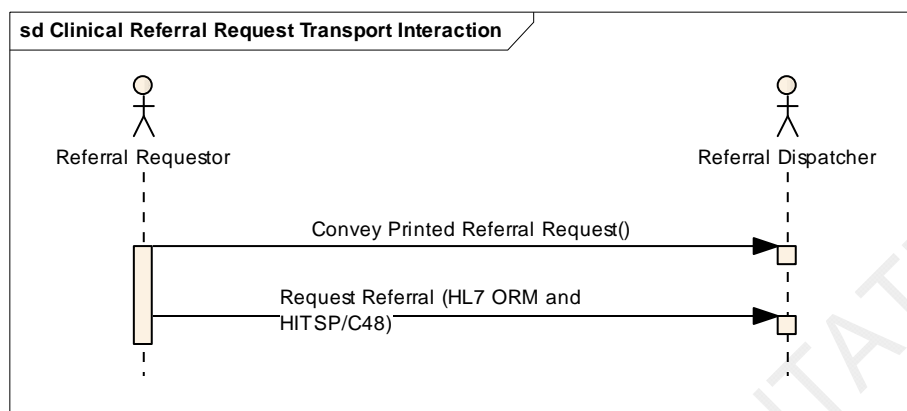
Constraint Code	Constraint Description
No applicable transaction/content constraints	

¹ Optionality = "R" for Required, "R2" for Required if Known, "O" for Optional, or "C" for Conditional



2.1.3 INTERFACE INTERACTIONS

Figure 2-1 Interface Interaction



The Referral Requestor and Referral Dispatcher interfaces communicate to request and receive a consultation referral. The referral request is made in 2 ways:

1. Paper Referral Request through the Convey Printed Referral Request transaction
2. HL7 ORM Request using the Request Referral Transaction

As stated in the underlying IHE DRR profile, the Referral Requestor is grouped with an XDS-MS Content Consumer Interface, and the Referral Dispatcher is grouped with a XDS-MS Content Creator Interface. HITSP/C48 Encounter Document using XDS-MS provides that content. The interface interactions, process flows, and Use Cases are described in detail in Section 22 of the IHE DRR profile, and Sections 3.49 and 3.50 of the Volume 2 Transactions.

2.1.4 PRE-CONDITIONS

Table 2-4 Pre-conditions

Pre-condition
It is expected that the security framework under which this Transaction operates is in accordance with the HITSP Interoperability Specification that references this construct. Therefore all applicable HITSP Security and Privacy constructs are implemented as required
Referral recipients have been identified (when using the optional online transaction)

2.1.4.1 PROCESS TRIGGERS

Table 2-5 Process Triggers

Process Trigger
Referral Requestor is ready to send

2.1.5 POST-CONDITIONS

This section provides an overview of the conditions or results that must occur at the end of the Transaction in order for the Transaction to be deemed successfully completed. This includes any required outputs from the Transaction, or specific interface states.



Table 2-6 Post-conditions

Post-condition
Referral has been accepted by Referral Dispatcher
Referral Requestor has received an acknowledgement (for Request Referral transaction)

2.1.5.1 REQUIRED OUTPUT**Table 2-7 Required Output**

Required Output	Format/Usage
No specific required output at the end of the transaction. Depends on the content	

2.1.6 DATA FLOWS

No additional data flows.

2.2 LIST OF HITSP CONSTRUCTS**Table 2-8 List of HITSP Constructs**

Construct Name	Description	Transaction/Content
HITSP/C48 Encounter Document Using IHE Medical Summary (XDS-MS)	Content Creator, Content Consumer	Content: Referral Request Document

2.2.1 CONSTRUCT DEPENDENCIES**Table 2-9 Construct Dependencies**

Construct	Depends On (Name of Component that it depends on)	Dependency Type (Pre-condition, post-condition, general)	Purpose (Reason for this dependency)
HITSP/T67 Clinical Referral Request Transport	HITSP/TP13 Manage Sharing of Documents OR HITSP/T31 Document Reliable Interchange HITSP/T33 Transfer of Documents on Media	Pre-condition	HITSP/T67 constrains the existing transport constructs in order to transport referral requests and related documents

2.2.2 ADDITIONAL CONSTRAINTS ON REQUIRED CONSTRUCTS**Table 2-10 Additional Constraints on Required Constructs**

Data Element	Construct	Constraint	Constraint Type (Pre-condition, post-condition, general)	Purpose (Reason for this constraint)
No applicable constraints				

2.3 STANDARDS**2.3.1 REGULATORY GUIDANCE****Table 2-11 Regulatory Guidance**

Regulation	Description
No applicable regulatory guidance	



2.3.2 SELECTED STANDARDS

Table 2-12 Selected Standards

Standard	Description
Integrating the Healthcare Enterprise (IHE) IT Infrastructure Technical Framework (ITI-TF) Supplement 2008-2009 Document-based Referral Request (DRR)	This profile describes how to relate a referral request document with relevant clinical documents, communicate the group of documents to a referral dispatcher with an optional online transaction to trigger the referral and communicate acceptance. For more information visit www.ihe.net

2.3.3 INFORMATIVE REFERENCE STANDARDS

Table 2-13 Informative Reference Standards

Standard	Description
No applicable informative reference standards	



3.0 DOCUMENT UPDATES

3.1 DECEMBER 10, 2008

The changes in this construct address the following comments received during the Public Comment and Inspection Testing period (September 29 – October 24, 2008).

No comments received.

3.2 DECEMBER 18, 2008

Upon approval by the HITSP Panel on December 18, 2008, this document is now Released for Implementation.

3.3 JUNE 30, 2009

Minor editorial changes were made to this document. Boilerplate text was removed for simplification. The term “actor” was replaced with “interface”.

3.4 JULY 8, 2009

Upon approval by the HITSP Panel on July 8, 2009, this document is now Released for Implementation.

