

HITSP Knowledge and Vocabulary Service Collaboration

HITSP/SC111



Healthcare Information Technology Standards Panel

Submitted to:

Healthcare Information Technology Standards Panel

Submitted by:

Security, Privacy and Infrastructure Tiger Team



DOCUMENT CHANGE HISTORY

Version Number	Description of Change	Name of Author	Date Published
0.0.1	Review Copy	Security, Privacy and Infrastructure Tiger Team	June 30, 2009
1.0	Released for Implementation	Security, Privacy and Infrastructure Tiger Team	July 8, 2009

COPYRIGHT NOTICE

© 2009 ANSI. This material may be copied without permission from ANSI only if and to the extent that the text is not altered in any fashion and ANSI's copyright is clearly noted.



TABLE OF CONTENTS

1.0	INTRODUCTION	5
1.1	Service Collaboration Overview and Scope	5
1.2	Service Collaboration Invocation	5
1.3	External View (i.e., "black box" diagram)	6
1.3.1	Service Collaboration Source Constructs	6
1.4	Internal View Diagram with Sequencing (i.e., "white box" diagram)	7
1.4.1	Interface: Request Medical Knowledge	7
1.4.1.1	Sequence Details: Request Medical Knowledge	7
1.4.2	Interface: Respond Medical Knowledge	8
1.4.2.1	Sequence Details: Respond Medical Knowledge	8
1.4.3	Interface: Request Value Set	9
1.4.3.1	Sequence Details: Request Value Set	9
1.4.4	Interface: Respond Value Set	10
1.4.4.1	Sequence Details: Respond Value Set	10
2.0	DOCUMENT UPDATES	11
2.1	June 30, 2009	11
2.2	July 8, 2009	11



FIGURES AND TABLES

Figure 1-1 Knowledge and Vocabulary Service Collaboration External View Diagram.....	6
Figure 1-2 Request Medical Knowledge Internal View	7
Figure 1-3 Respond Medical Knowledge Internal View	8
Figure 1-4 Request Value Set Internal View.....	9
Figure 1-5 Respond Value Set Internal View.....	10
Table 1-1 Service Collaboration Transactions and Data	5
Table 1-2 List of Constructs	6
Table 1-3 Request Medical Knowledge – Pre-conditions	7
Table 1-4 Request Medical Knowledge – Sequence of Constructs.....	7
Table 1-5 Request Medical Knowledge – Post-Conditions.....	7
Table 1-6 Respond Medical Knowledge – Pre-conditions	8
Table 1-7 Respond Medical Knowledge – Sequence of Constructs	8
Table 1-8 Respond Medical Knowledge – Post-conditions	8
Table 1-9 Request Value Set – Pre-conditions.....	9
Table 1-10 Request Value Set – Sequence of Constructs	9
Table 1-11 Request Value Set – Post-conditions	9
Table 1-12 Respond Value Set – Pre-conditions.....	10
Table 1-13 Respond Value Set – Sequence of Constructs	10
Table 1-14 Respond Value Set – Post-conditions	10



1.0 INTRODUCTION

1.1 SERVICE COLLABORATION OVERVIEW AND SCOPE

The Knowledge and Vocabulary Service Collaboration provides the ability to retrieve medical knowledge and terminology. This Service Collaboration utilizes:

- HITSP/T81 Retrieval of Medical Knowledge which enables the request and receipt of additional knowledge about a medical concept based on specific context parameters. This Transaction does not prescribe the knowledge content of the message returned but provides the specifications for the query and receipt of additional knowledge
- HITSP/T66 Retrieve Value Set which enables the request and receipt of value set with the appropriate terminology or code system and a value set with an appropriate map from one terminology to another

For more information about the underlying capabilities, pre-conditions, post-conditions, data flows and other detailed information, please refer to the constructs that are used by this Service Collaboration.

The Service Collaboration document illustrates one internal view diagram and sequence table for each service interface. The diagrams are descriptive and the sequences are not mandatory. They may be affected by policy, chosen architecture, and implementation details. Conformance is measured against the underlying constructs.

1.2 SERVICE COLLABORATION INVOCATION

Table 1-1 Service Collaboration Transactions and Data

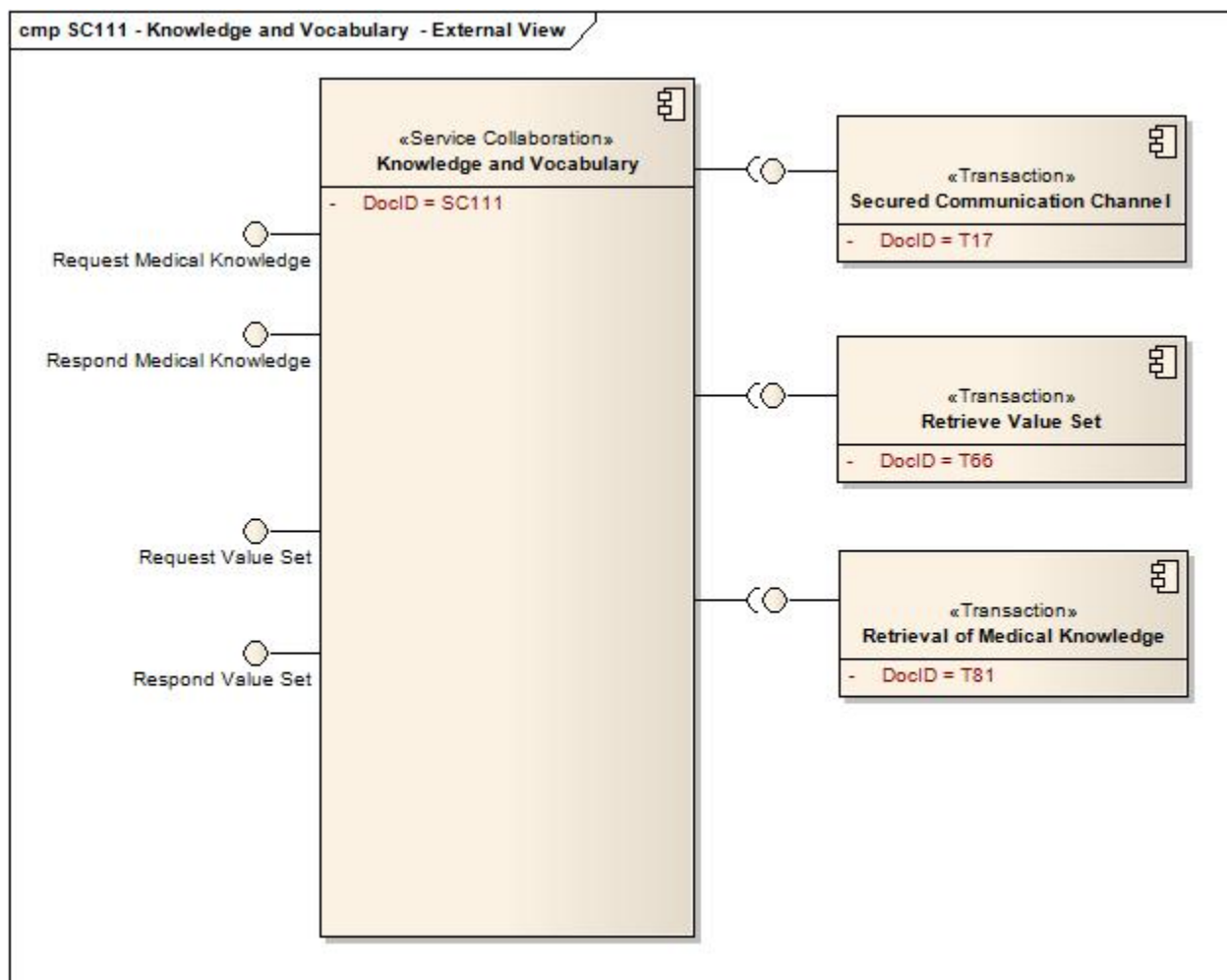
Service Collaboration	Service Collaboration Description	Interface	Interface Optionality ¹
HITSP/SC111 - Knowledge and Vocabulary	Provides the ability to request medical knowledge from a knowledge repository	Request Medical Knowledge	R
HITSP/SC111 - Knowledge and Vocabulary	Provides the ability for a knowledge repository to respond to a request for medical knowledge	Respond Medical Knowledge	R
HITSP/SC111 - Knowledge and Vocabulary	Provides the ability to request a value set from a value set repository	Request Value Set	R
HITSP/SC111 - Knowledge and Vocabulary	Provides a value set repository the ability to respond to a value set request	Respond Value Set	R

¹ Optionality = "R" for Required, "R2" for Required if Known or "O" for Optional, or "C" for Conditional



1.3 EXTERNAL VIEW (i.e., “black box” diagram)

Figure 1-1 Knowledge and Vocabulary Service Collaboration External View Diagram



1.3.1 SERVICE COLLABORATION SOURCE CONSTRUCTS

Table 1-2 List of Constructs

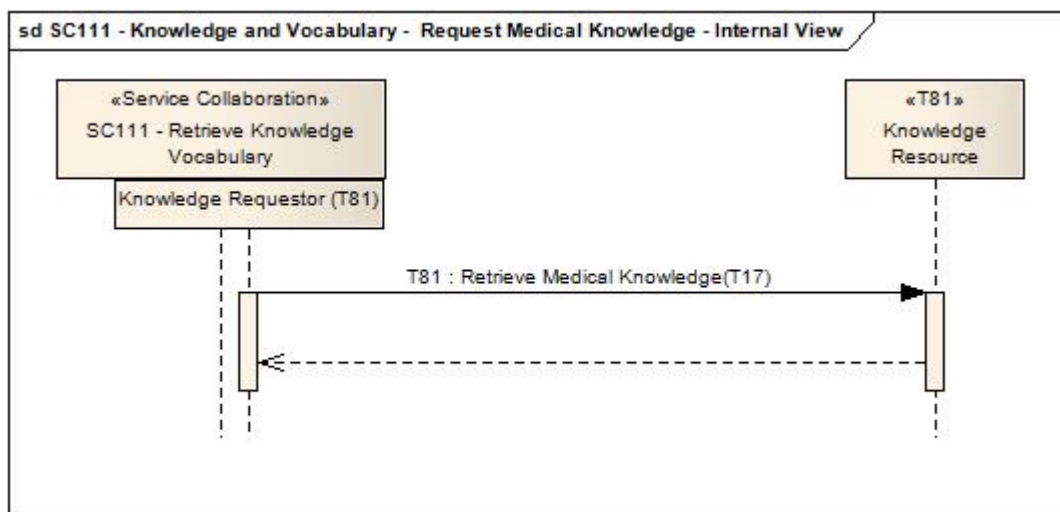
Construct
HITSP/T17 - Secured Communication Channel
HITSP/T66 - Retrieve Value Set
HITSP/T81 - Retrieval of Medical Knowledge



1.4 INTERNAL VIEW DIAGRAM WITH SEQUENCING (i.e., “white box” diagram)

1.4.1 INTERFACE: REQUEST MEDICAL KNOWLEDGE

Figure 1-2 Request Medical Knowledge Internal View



1.4.1.1 SEQUENCE DETAILS: REQUEST MEDICAL KNOWLEDGE

Table 1-3 Request Medical Knowledge – Pre-conditions

Pre-conditions	Uses SC, T, TP or C	Interface	Purpose
A secure communications channel shall exist	HITSP/T17 - Secured Communication Channel	Secure Node	A secure communications channel must be open in order to protect the authenticity and integrity of the information being transmitted

Table 1-4 Request Medical Knowledge – Sequence of Constructs

Step Number	Uses SC, T, TP or C	Interface	Purpose
1	HITSP/T81 - Retrieval of Medical Knowledge	Knowledge Requestor	To request knowledge from the knowledge resource

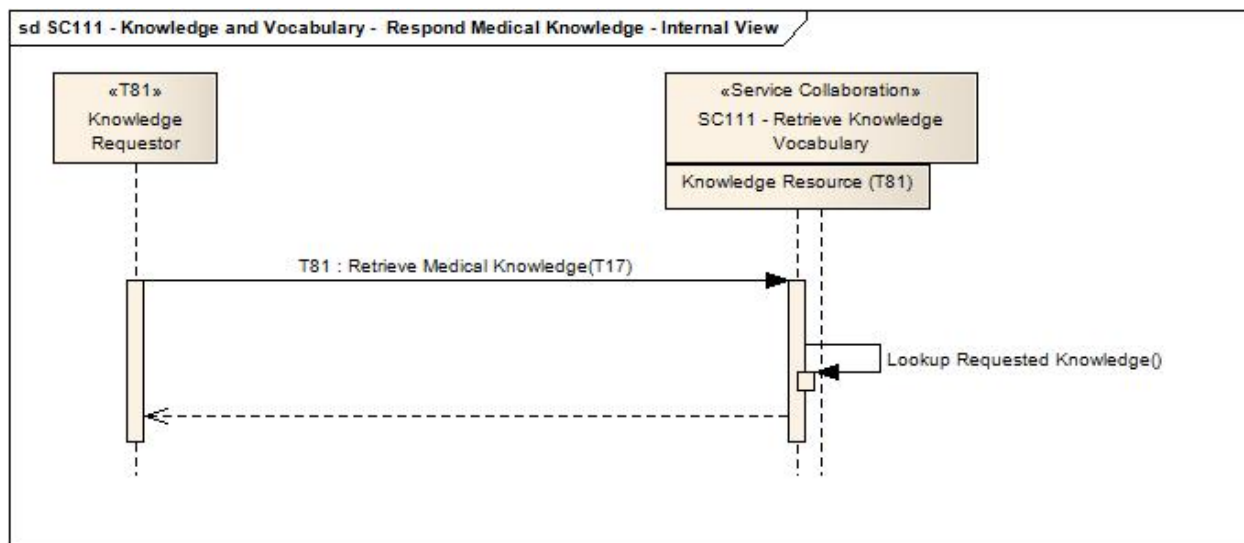
Table 1-5 Request Medical Knowledge – Post-Conditions

Post-conditions	Uses SC, T, TP or C	Interface	Purpose
None			



1.4.2 INTERFACE: RESPOND MEDICAL KNOWLEDGE

Figure 1-3 Respond Medical Knowledge Internal View



1.4.2.1 SEQUENCE DETAILS: RESPOND MEDICAL KNOWLEDGE

Table 1-6 Respond Medical Knowledge – Pre-conditions

Pre-condition	Uses SC, T, TP or C	Interface	Purpose
A secure communications channel shall exist	HITSP/T17 - Secure Communications Channel	Secure Node	A secure communications channel must be open in order to protect the authenticity and integrity of the information being transmitted

Table 1-7 Respond Medical Knowledge – Sequence of Constructs

Step Number	Uses SC, T, TP or C	Interface	Purpose
1	HITSP/T81 - Retrieval of Medical Knowledge	Knowledge Resource	To receive the request for knowledge
2	None	None	Look up the requested knowledge
3	HITSP/T81 - Retrieval of Medical Knowledge	Knowledge Resource	To return the requested knowledge

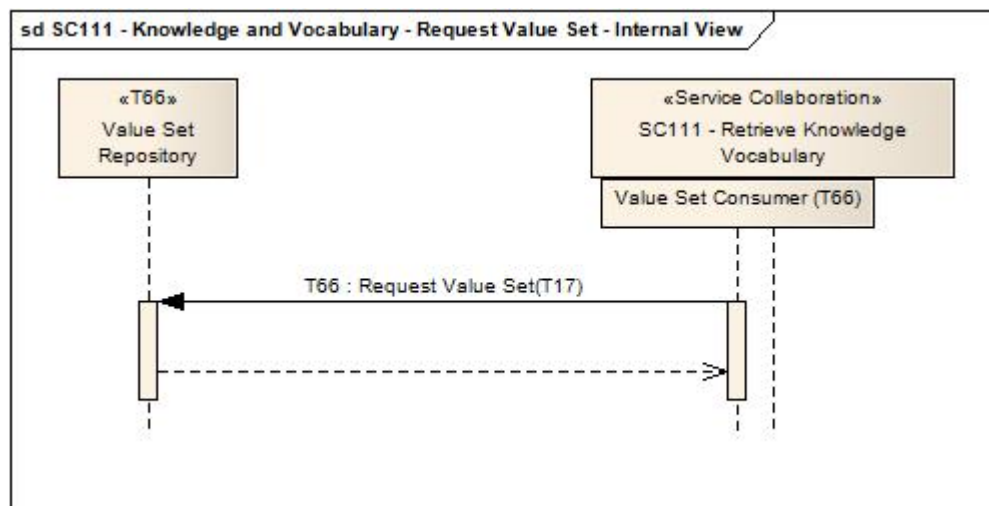
Table 1-8 Respond Medical Knowledge – Post-conditions

Post-Condition	Uses SC, T, TP or C	Interface	Purpose
None			



1.4.3 INTERFACE: REQUEST VALUE SET

Figure 1-4 Request Value Set Internal View



1.4.3.1 SEQUENCE DETAILS: REQUEST VALUE SET

Table 1-9 Request Value Set – Pre-conditions

Pre-condition	Uses SC, T, TP or C	Interface	Purpose
A secure communications channel shall exist	HITSP/T17 - Secured Communication Channel	Secure Node	A secure communications channel must be open in order to protect the authenticity and integrity of the information being transmitted

Table 1-10 Request Value Set – Sequence of Constructs

Step Number	Uses SC, T, TP or C	Interface	Purpose
1	HITSP/T66 - Terminology Service	Value Set Consumer	To request value set from a value set repository

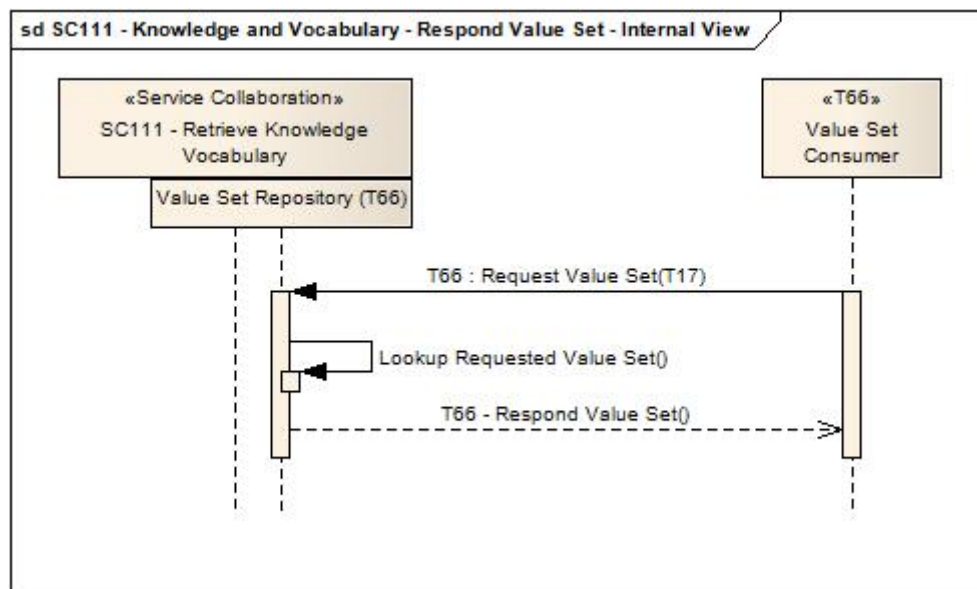
Table 1-11 Request Value Set – Post-conditions

Post-Condition	Uses SC, T, TP or C	Interface	Purpose
None			



1.4.4 INTERFACE: RESPOND VALUE SET

Figure 1-5 Respond Value Set Internal View



1.4.4.1 SEQUENCE DETAILS: RESPOND VALUE SET

Table 1-12 Respond Value Set – Pre-conditions

Pre-condition	Uses SC, T, TP or C	Interface	Purpose
A secure communications channel shall exist	HITSP/T17 - Secured Communication Channel	Secure Node	A secure communications channel must be open in order to protect the authenticity and integrity of the information being transmitted

Table 1-13 Respond Value Set – Sequence of Constructs

Step Number	Uses SC, T, TP or C	Interface	Purpose
1	HITSP/T66 - Retrieve Value Set	Value Set Repository	To receive the request for value set
2	None	None	Look up the requested value set
3	HITSP/T66 - Retrieve Value Set	Value Set Repository	To return the value set

Table 1-14 Respond Value Set – Post-conditions

Post-Condition	Uses SC, T, TP or C	Interface	Purpose
Not applicable			



2.0 DOCUMENT UPDATES

The following sections provide the history of all changes made to this document.

2.1 JUNE 30, 2009

No changes. This is the first published version of the document.

2.2 JULY 8, 2009

Upon approval by the HITSP Panel on July 8, 2009, this document is now Released for Implementation.

