

HITSP Administrative Transport to Health Plan Service Collaboration

HITSP/SC114



Healthcare Information Technology Standards Panel

Submitted to:

Healthcare Information Technology Standards Panel

Submitted by:

**Security, Privacy and Infrastructure Domain Technical Committee
(Formerly Security and Privacy Technical Committee)**



DOCUMENT CHANGE HISTORY

Version Number	Description of Change	Name of Author	Date Published
0.0.1	Review Copy	Security, Privacy and Infrastructure Tiger Team	June 30, 2009
1.0	Released for Implementation	Security, Privacy and Infrastructure Tiger Team	July 8, 2009
1.0.1	Review Copy	Security, Privacy and Infrastructure Domain Technical Committee	January 18, 2010
1.1	Released for Implementation	Security, Privacy and Infrastructure Domain Technical Committee	January 25, 2010

COPYRIGHT NOTICE

© 2010 ANSI. This material may be copied without permission from ANSI only if and to the extent that the text is not altered in any fashion and ANSI's copyright is clearly noted.



TABLE OF CONTENTS

1.0	INTRODUCTION.....	5
1.1	Service Collaboration Overview and Scope	5
1.2	Service Collaboration Invocation	5
1.3	External View (i.e., “Black Box” Diagram)	6
1.3.1	Service Collaboration Source Constructs.....	7
1.4	Internal View Diagram with Sequencing (i.e., “White Box” Diagram)	7
1.4.1	Interface: Request Administrative Transport to Health Plan Internal View	8
1.4.2	Interface: Respond to Administrative Request to Health Plan	9
1.4.2.1	Sequence Details	9
2.0	DOCUMENT UPDATES	10
2.1	June 30, 2009.....	10
2.2	July 8, 2009	10
2.3	January 18, 2010.....	10
2.4	January 25, 2010	10



FIGURES AND TABLES

Figure 1-1 Administrative Transport to Health Plan External View Diagram	6
Figure 1-2 Request Administrative Transport to Health Plan Internal View	8
Figure 1-3 Respond to Administrative Request to Health Plan Internal View	9
Table 1-1 Service Collaboration Transactions and Data	5
Table 1-2 List of Constructs	7
Table 1-3 Request Administrative Transport to Health Plan – Pre-conditions	8
Table 1-4 Request Administrative Transport to Health Plan – Sequence of Constructs	8
Table 1-5 Request Administrative Transport to Health Plan – Post-conditions	8
Table 1-6 Respond Administrative Transport to Health Plan – Pre-conditions	9
Table 1-7 Respond Administrative Transport to Health Plan – Sequence of Constructs	9
Table 1-8 Respond Administrative Transport to Health Plan – Post-conditions	9



1.0 INTRODUCTION

1.1 SERVICE COLLABORATION OVERVIEW AND SCOPE

The Administrative Transport to Health Plan Service Collaboration provides the transport mechanism for conducting administrative transactions with health plans. This Service Collaboration utilizes:

- HITSP/T17 Secured Communication Channel as a pre-condition
- HITSP/SC109 Security Audit
- HITSP/SC108 Access Control
- HITSP/T85 Administrative Transport to Health Plan

For more information about the underlying Capabilities, pre-conditions, post-conditions, data flows and other detailed information, please refer to the constructs that are used by this Service Collaboration.

The Service Collaboration document illustrates one internal view diagram and sequence table for each service interface. The diagrams are descriptive and the sequences are not mandatory. They may be affected by policy, chosen architecture, and implementation details. Conformance is measured against the underlying constructs.

1.2 SERVICE COLLABORATION INVOCATION

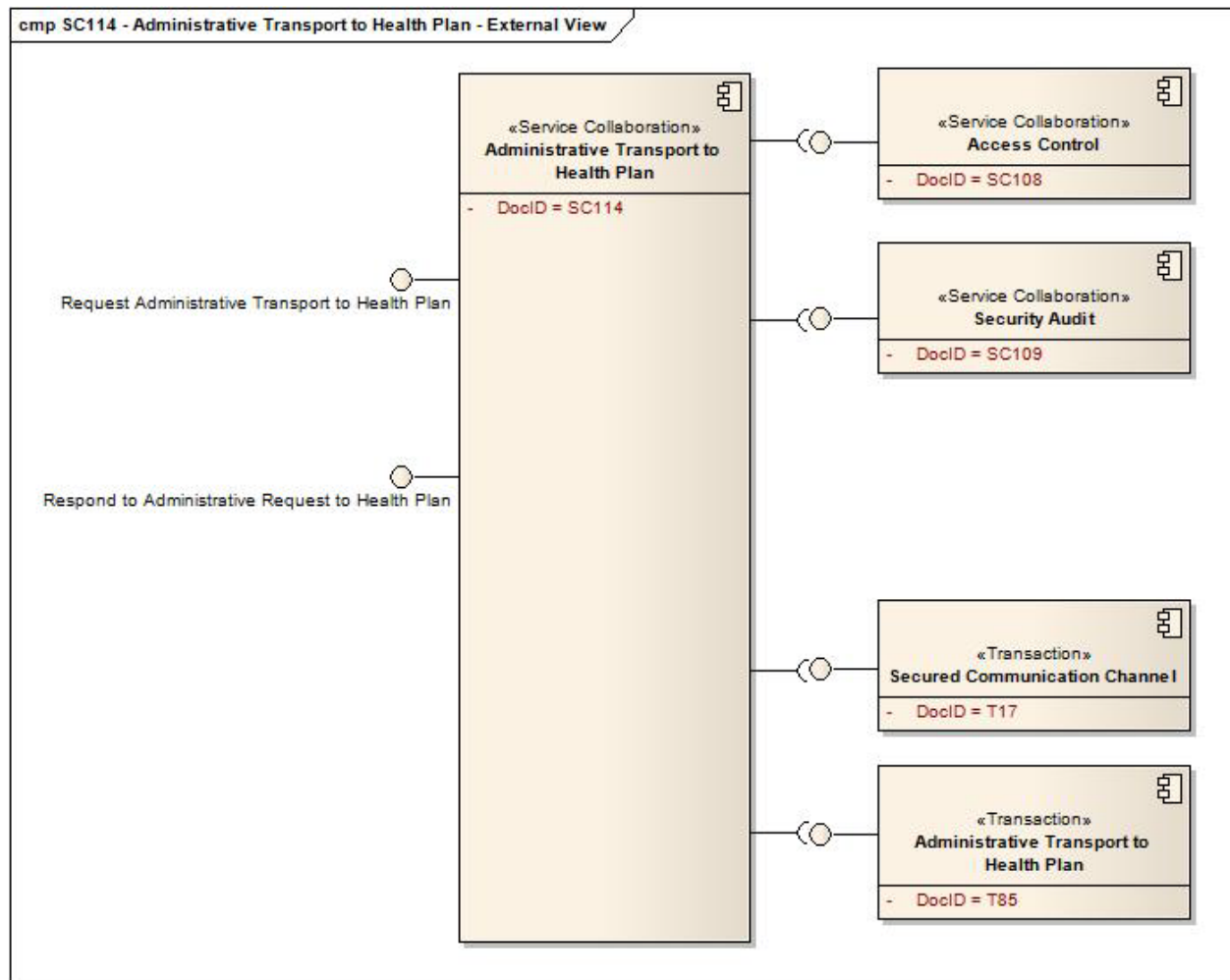
Table 1-1 Service Collaboration Transactions and Data

Service Collaboration	Service Collaboration Description	Interface
HITSP/SC114	Provides the ability to request an administrative transport transaction to a Health Plan	Request Administrative Transport to Health Plan
HITSP/SC114	Provides the ability to respond to a request for administrative transport transaction to health plan	Respond to Administrative Request to Health Plan



1.3 EXTERNAL VIEW (i.e., “Black Box” Diagram)

Figure 1-1 Administrative Transport to Health Plan External View Diagram



1.3.1 SERVICE COLLABORATION SOURCE CONSTRUCTS

Table 1-2 List of Constructs

Construct	Description
HITSP/SC108 - Access Control	The HITSP Access Control Service Collaboration provides the mechanism for security authorizations which control the enforcement of security policies including: role-based access control, entity based access control, context based access control, and the execution of consent directives
HITSP/SC109 - Security Audit	The HITSP Security Audit Service Collaboration describes the mechanism to record security relevant events in support of policy, regulation, or risk analysis. It also provides the mechanism to determine the record format to support analytical reports that are needed
HITSP/T17 - Secured Communication Channel	The HITSP Secured Communication Channel Transaction provides the mechanisms to ensure the authenticity, integrity, and confidentiality of transmissions, and the mutual trust between communicating parties. Its objectives include providing: mutual node authentication to assure each node of the others' identity; transmission integrity to guard against improper information modification or destruction while in transit; and transmission confidentiality to ensure that information in transit is not disclosed to unauthorized individuals, entities, or processes
HITSP/T85 - Administrative Transport to Health Plan	The HITSP Administrative Transport to Health Plan Transaction will be used as the transport for administrative transactions between a provider and a health plan. Examples include a pharmacy obtaining health plan eligibility, and a physician requesting referral or authorization information from a health plan. This construct is based on the CAQH Phase II CORE #270 Connectivity Rule v2.0.0, which addresses the message envelope metadata, the message envelope standards, and the submitter authentication standards for administrative transactions, as well as communications-level errors, and acknowledgements

1.4 INTERNAL VIEW DIAGRAM WITH SEQUENCING (i.e., “White Box” Diagram)

There is one example diagram included for each service interface. The diagrams are descriptive and the sequences are not mandatory. They may be affected by policy, chosen architecture, and implementation details. Conformance is measured against the underlying constructs.



1.4.1 INTERFACE: REQUEST ADMINISTRATIVE TRANSPORT TO HEALTH PLAN INTERNAL VIEW

Figure 1-2 Request Administrative Transport to Health Plan Internal View

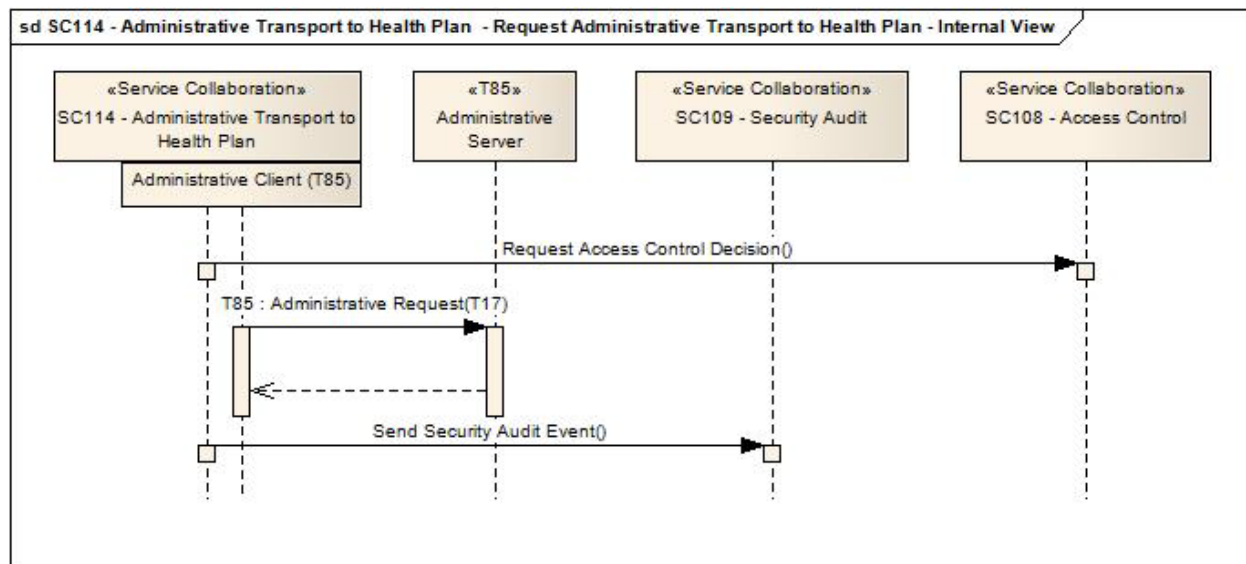


Table 1-3 Request Administrative Transport to Health Plan – Pre-conditions

Pre-condition	Uses SC, T, TP or C	Interface	Purpose
None			

Table 1-4 Request Administrative Transport to Health Plan – Sequence of Constructs

Step Number	Uses SC, T, TP or C	Interface	Purpose
1	HITSP/SC108 - Access Control	Request Access Control Decision	If required by organizational and mutual agreed upon policies, perform access controls to ensure that the payload in the request can be shared with administrative server
2	HITSP/T17 - Secured Communication Channel	Secure Node	A secured communication channel must be open in order to protect the confidentiality, authenticity and integrity of the information being transmitted
3	HITSP/T85 - Administrative Transport to Health Plan	Administrative Client	Administrative client initiates a request and receives a response from Administrative Server
4	HITSP/SC109 - Security Audit	Send Security Audit Event	Send an audit event to the audit record repository

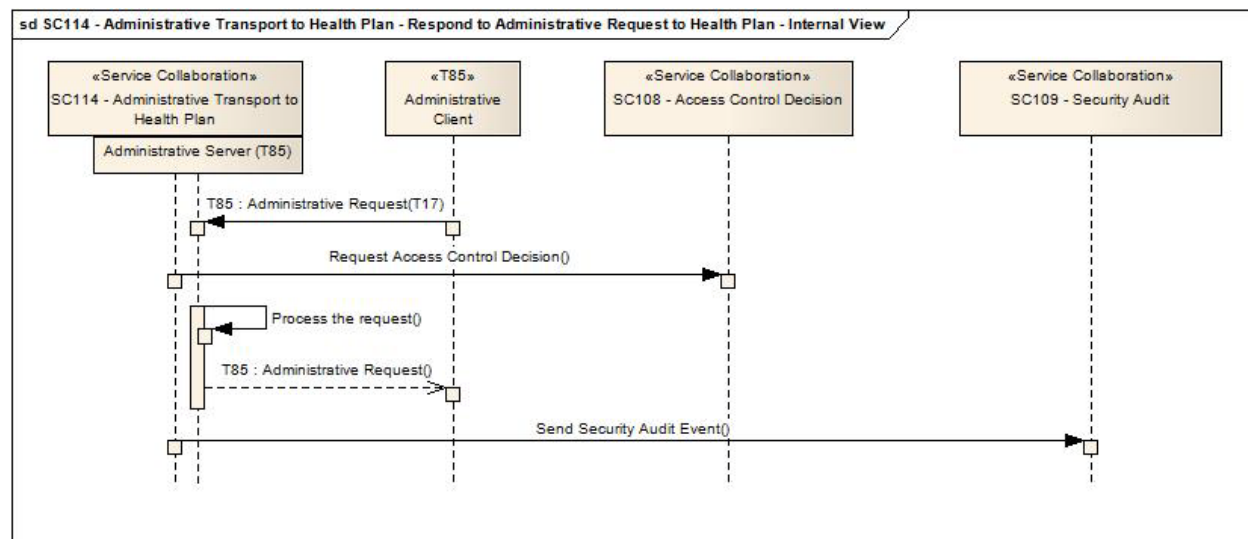
Table 1-5 Request Administrative Transport to Health Plan – Post-conditions

Post-condition	Uses SC, T, TP or C	Interface	Purpose
None			



1.4.2 INTERFACE: RESPOND TO ADMINISTRATIVE REQUEST TO HEALTH PLAN

Figure 1-3 Respond to Administrative Request to Health Plan Internal View



1.4.2.1 SEQUENCE DETAILS

Table 1-6 Respond Administrative Transport to Health Plan – Pre-conditions

Pre-condition	Uses SC, T, TP or C	Interface	Purpose
None			

Table 1-7 Respond Administrative Transport to Health Plan – Sequence of Constructs

Step Number	Uses SC, T, TP or C	Interface	Purpose
1	HITSP/T17 - Secured Communication Channel	Secure Node	A secured communication channel is open in order to protect the confidentiality, authenticity and integrity of the information being transmitted
2	HITSP/T85 - Administrative Transport to Health Plan	Administrative Server	Administrative server receives a request from the Administrative Client
3	HITSP/SC108 - Access Control	Request Access Control Decision	If required by organizational and mutual agreed upon policies, perform access controls to ensure whether the request is authorized to be processed
4	n/a (Loopback)	Internal Processing	Process the request from the administrative client
5	HITSP/T85 - Administrative Transport to Health Plan	Administrative Server	The administrative server returns the response to the administrative client
6	HITSP/SC109 - Security Audit	Send Security Audit Event	Send an audit event to the audit record repository

Table 1-8 Respond Administrative Transport to Health Plan – Post-conditions

Post-condition	Uses SC, T, TP or C	Interface	Purpose
None			



2.0 DOCUMENT UPDATES

The following sections provide the history of all changes made to this document.

2.1 JUNE 30, 2009

No changes. This is the first published version of the document.

2.2 JULY 8, 2009

Upon approval by the HITSP Panel on July 8, 2009, this document is now Released for Implementation.

2.3 JANUARY 18, 2010

Minor editorial updates to the diagrams to correct typographical errors and ensure consistency with sequence tables.

Updated to HITSP Service Collaboration Template Version 1.0.

2.4 JANUARY 25, 2010

Upon approval by the HITSP Panel on January 25, 2010, this document is now Released for Implementation.

