

HITSP Query for Existing Data Service Collaboration

HITSP/SC113



Healthcare Information Technology Standards Panel

Submitted to:

Healthcare Information Technology Standards Panel

Submitted by:

Security, Privacy and Infrastructure Tiger Team



DOCUMENT CHANGE HISTORY

Version Number	Description of Change	Name of Author	Date Published
0.0.1	Review Copy	Security, Privacy and Infrastructure Tiger Team	June 30, 2009
1.0	Released for Implementation	Security, Privacy and Infrastructure Tiger Team	July 8, 2009

COPYRIGHT NOTICE

© 2009 ANSI. This material may be copied without permission from ANSI only if and to the extent that the text is not altered in any fashion and ANSI's copyright is clearly noted.



TABLE OF CONTENTS

1.0	INTRODUCTION	5
1.1	Service Collaboration Overview and Scope	5
1.2	Service Collaboration Invocation	5
1.3	External View (i.e., "black box" diagram)	6
1.3.1	Service Collaboration Source Constructs	6
1.4	Internal View Diagram with Sequencing (i.e., "white box" diagram)	7
1.4.1	Interface: Request Existing Data	7
1.4.1.1	Sequence Details	7
1.4.2	Interface: Respond Existing Patient Data	8
1.4.2.1	Sequence Details	8
2.0	DOCUMENT UPDATES	9
2.1	June 30, 2009	9
2.2	July 8, 2009	9



FIGURES AND TABLES

Figure 1-1 Query for Existing Data External View diagram	6
Figure 1-2 Request Existing Data Internal View	7
Figure 1-3 Respond Existing Patient Data Internal View	8
Table 1-1 Service Collaboration Transactions and Data	5
Table 1-2 List of Constructs	6
Table 1-3 Sequence of Constructs – Pre-Conditions	7
Table 1-4 Sequence of Constructs	7
Table 1-5 Sequence of Constructs – Post-Conditions	7
Table 1-6 Sequence of Constructs – Pre-Conditions	8
Table 1-7 Sequence of Constructs	8
Table 1-8 Sequence of Constructs – Post-Conditions	8



1.0 INTRODUCTION

1.1 SERVICE COLLABORATION OVERVIEW AND SCOPE

The HITSP Query for Existing Data Service Collaboration provides the capability to query and retrieve data from another clinical system, and the capability to respond to same queries. The Service Collaboration applies the necessary Security and Privacy constructs. The Service Collaboration supports all the queries found in HITSP/TP21 Query for Existing Data, including:

- Vital Signs
- Problems and Allergies
- Diagnostic Data
- Medications
- Immunizations
- Professional Services

For more information about the underlying capabilities, pre-conditions, post-conditions, data flows and other detailed information, please refer to the constructs that are used by this Service Collaboration.

The Service Collaboration document illustrates one internal view diagram and sequence table for each service interface. The diagrams are descriptive and the sequences are not mandatory. They may be affected by policy, chosen architecture, and implementation details. Conformance is measured against the underlying constructs.

1.2 SERVICE COLLABORATION INVOCATION

Table 1-1 Service Collaboration Transactions and Data

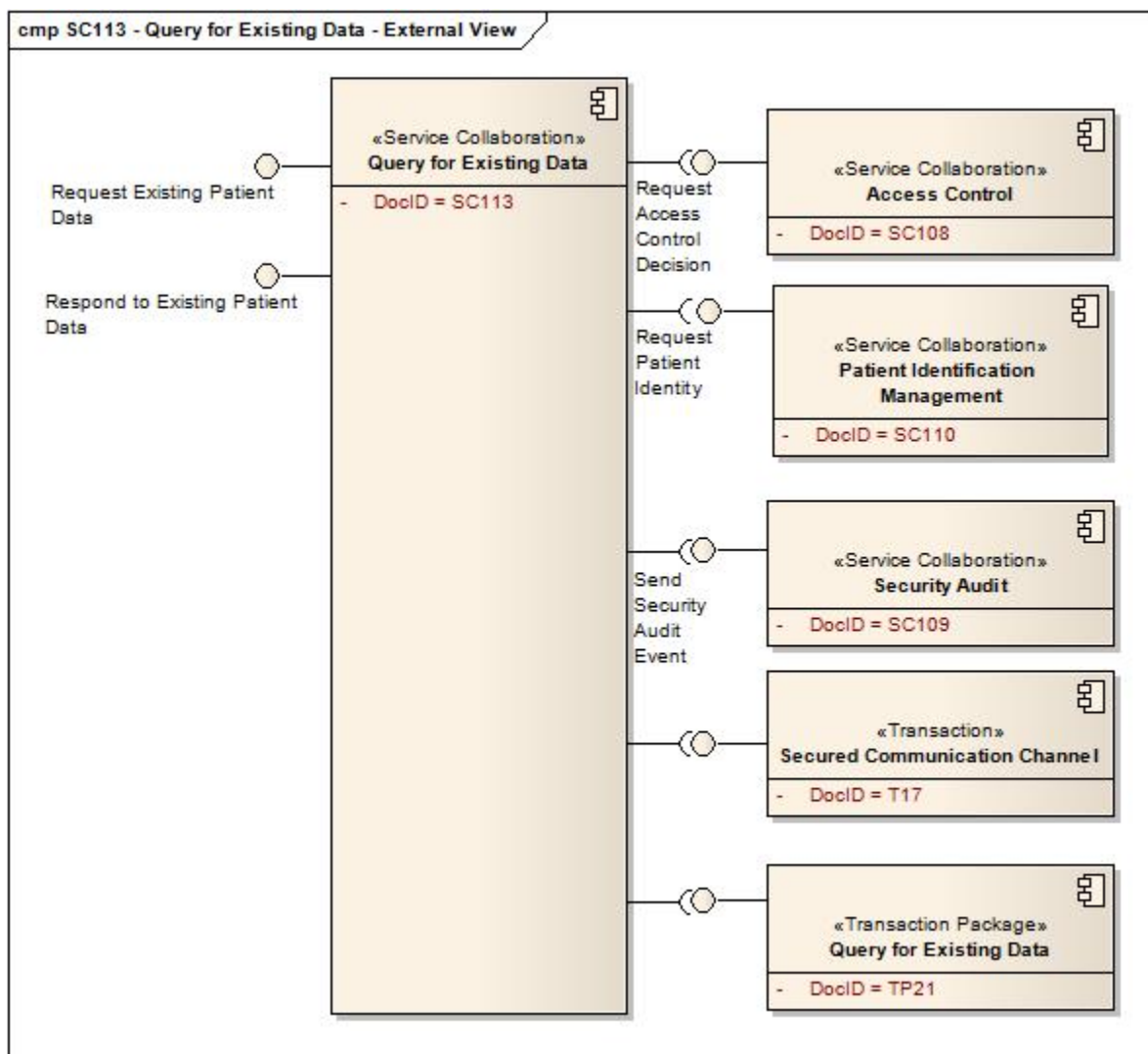
Service Collaboration	Service Collaboration description	Transaction or Data	Transaction or Data Optionality ¹
HITSP/SC113 - Query for Existing Data	Requests existing patient data from another clinical system	Request Existing Patient Data	R
HITSP/SC113 - Query for Existing Data	Provides data for another clinical system	Respond to Existing Patient Data	R

¹ Optionality = "R" for Required, "R2" for Required if Known or "O" for Optional, or "C" for Conditional



1.3 EXTERNAL VIEW (i.e., “black box” diagram)

Figure 1-1 Query for Existing Data External View diagram



1.3.1 SERVICE COLLABORATION SOURCE CONSTRUCTS

Table 1-2 List of Constructs

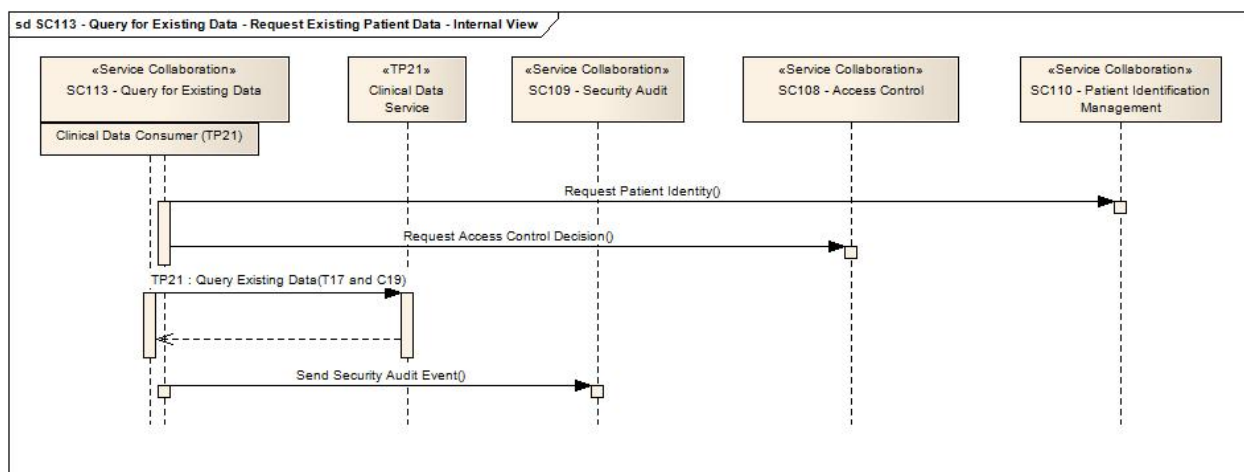
Construct
HITSP/SC108 - Access Control
HITSP/SC109 - Security Audit
HITSP/SC110 - Patient Identification Management
HITSP/T17 - Secured Communication Channel
HITSP/TP21 - Query for Existing Data



1.4 INTERNAL VIEW DIAGRAM WITH SEQUENCING (i.e., “white box” diagram)

1.4.1 INTERFACE: REQUEST EXISTING DATA

Figure 1-2 Request Existing Data Internal View



1.4.1.1 SEQUENCE DETAILS

Table 1-3 Sequence of Constructs – Pre-Conditions

Pre-condition	Uses SC, T, TP or C	Interface	Purpose
None			

Table 1-4 Sequence of Constructs

Step Number	Uses SC, T, TP or C	Interface	Purpose
1	HITSP/SC110 - Patient Identification Management	Request Patient Identification	To resolve the patient identity into the identity that the Clinical Data Service requires
2	HITSP/SC108 - Access Control Service	Request Access Control Decision	To ensure that the user of this Service Collaboration has the right to use the HITSP/TP21 Transaction for this patient and this purpose
3	HITSP/T17 - Secured Communication Channel	Secure Node	To open a secure communications channel for HITSP/TP21 to transmit clinical data
4	HITSP/C19 - Entity Identity Assertion		To provide the identity and attributes about the requestor of the HITSP/TP21 Transaction
5	HITSP/TP21 - Query for Existing Data	Clinical Data Consumer	To request and receive the existing data
6	HITSP/SC109 - Security Audit	Send Security Audit Event	To record the success or failure of the relevant information about the HITSP/TP21 Transaction

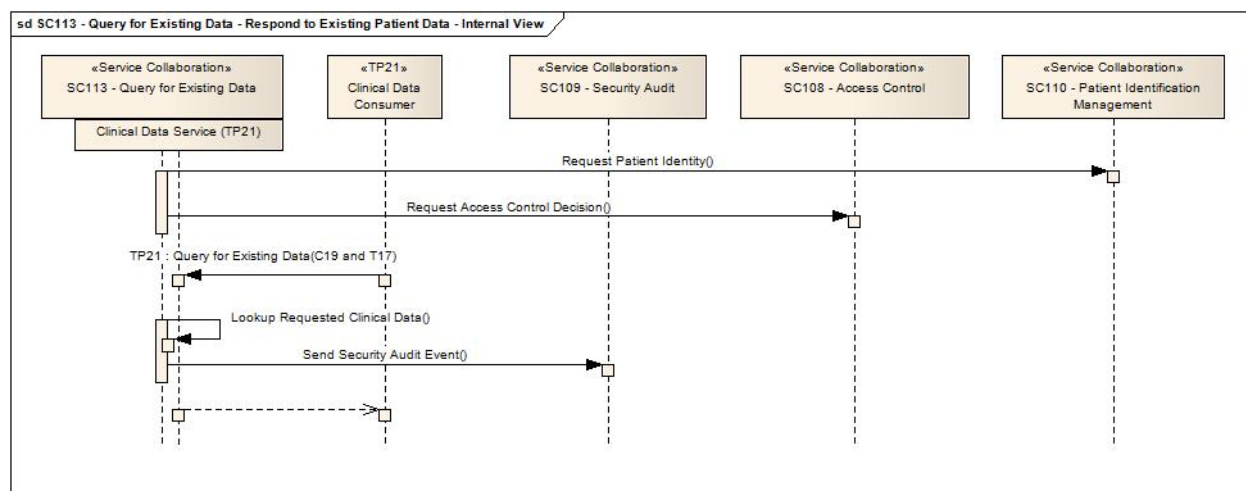
Table 1-5 Sequence of Constructs – Post-Conditions

Post-conditions	Uses SC, T, TP or C	Interface	Purpose
None			



1.4.2 INTERFACE: RESPOND EXISTING PATIENT DATA

Figure 1-3 Respond Existing Patient Data Internal View



1.4.2.1 SEQUENCE DETAILS

Table 1-6 Sequence of Constructs – Pre-Conditions

Pre-condition	Uses SC, T, TP or C	Interface	Purpose
None			

Table 1-7 Sequence of Constructs

Step Number	Uses SC, T, TP or C	Interface	Purpose
1	HITSP/T17 - Secured Communication Channel	Secure Node	To receive a secure communications channel for HITSP/TP21 to transmit clinical data
2	HITSP/C19 - Entity Identity Assertion		To receive the identity and attributes about the requestor of the HITSP/TP21 Transaction
3	HITSP/TP21 - Query for Existing Data	Depends on payload.	Receive the request for existing Data
4	HITSP/SC110 - Patient Identification Management	Request Patient Identification	If required, resolve the patient identity into the identity that the Clinical Data Service requires
5	HITSP/SC108 - Access Control Service	Request Access Control Decision	To ensure that the user of this Service Collaboration has the right to use the data for this patient and this purpose
6	(Internal)		Lookup the requested data
7	HITSP/SC109 - Security Audit	Send Security Audit Event	To record the success or failure of the relevant information about the HITSP/TP21 Transaction
8	HITSP/TP21 - Query for Existing Data	Depends on payload.	Return the requested Data

Table 1-8 Sequence of Constructs – Post-Conditions

Post-conditions	Uses SC, T, TP or C	Interface	Purpose
None			



2.0 DOCUMENT UPDATES

The following sections provide the history of all changes made to this document.

2.1 JUNE 30, 2009

No changes. This is the first published version of the document.

2.2 JULY 8, 2009

Upon approval by the HITSP Panel on July 8, 2009, this document is now Released for Implementation.

