

# HITSP Identify Communication Recipients Transaction

---

HITSP/T64



Healthcare Information Technology Standards Panel

*Submitted to:*

**Healthcare Information Technology Standards Panel**

*Submitted by:*

**Security, Privacy and Infrastructure Domain Technical Committee  
(Formerly Security and Privacy Technical Committee)**



## DOCUMENT CHANGE HISTORY

Version Number	Description of Change	Name of Author	Date Published
	Template Updated to V2.4	Project Team	July 31, 2008
0.0.1	Review Copy	Security, Privacy and Infrastructure Domain Technical Committee	September 26, 2008
0.0.2	Review Copy	Security, Privacy and Infrastructure Domain Technical Committee	December 10, 2008
1.0	Released for Implementation	Security, Privacy and Infrastructure Domain Technical Committee	December 18, 2008
	Template V2.5	Project Team	June 30, 2009
1.0.1	Review Copy	Security, Privacy and Infrastructure Domain Technical Committee	June 30, 2009
1.1	Released for Implementation	Security, Privacy and Infrastructure Domain Technical Committee	July 8, 2009



# TABLE OF CONTENTS

<b>1.0</b>	<b>INTRODUCTION.....</b>	<b>5</b>
1.1	Overview.....	5
1.2	Copyright Permissions.....	5
1.3	Reference Documents.....	5
1.4	Conformance .....	5
1.4.1	Conformance Criteria .....	5
1.4.2	Conformance Scoping, Subsetting and Options .....	6
<b>2.0</b>	<b>TRANSACTION DEFINITION.....</b>	<b>7</b>
2.1	Context Overview .....	7
2.1.1	Transaction Constraints.....	8
2.1.2	Interfaces.....	8
2.1.3	Interface Interactions.....	8
2.1.4	Pre-conditions.....	9
2.1.4.1	Process Triggers .....	9
2.1.5	Post-conditions.....	9
2.1.5.1	Required Output.....	9
2.1.6	Data Flows.....	9
2.2	List of HITSP Constructs .....	9
2.2.1	Construct Dependencies .....	9
2.2.2	Additional Constraints on Required Constructs.....	10
2.3	Standards .....	10
2.3.1	Regulatory Guidance.....	10
2.3.2	Selected Standards .....	10
2.3.3	Informative Reference Standards.....	10
<b>3.0</b>	<b>APPENDIX.....</b>	<b>11</b>
<b>4.0</b>	<b>DOCUMENT UPDATES .....</b>	<b>12</b>
4.1	December 10, 2008 .....	12
4.2	December 18, 2008 .....	12
4.3	June 30, 2009.....	12
4.4	July 8, 2009 .....	12



## FIGURES AND TABLES

Figure 2-1 Identify Communication Recipients Interaction .....	8
Table 1-1 Reference Documents .....	5
Table 2-1 Transaction Constraints .....	8
Table 2-2 Interfaces .....	8
Table 2-3 Interface and Transaction/Content Constraints .....	8
Table 2-4 Pre-conditions .....	9
Table 2-5 Process Triggers .....	9
Table 2-6 Post-conditions .....	9
Table 2-7 Required Output .....	9
Table 2-8 List of HITSP Constructs .....	9
Table 2-9 Construct Dependencies .....	9
Table 2-10 Additional Constraints on Required Constructs .....	10
Table 2-11 Regulatory Guidance .....	10
Table 2-12 Selected Standards .....	10
Table 2-13 Informative Reference Standards .....	10



## 1.0 INTRODUCTION

### 1.1 OVERVIEW

The HITSP Identify Communication Recipients Transaction construct is intended to serve the purpose of identification of communication recipients and the subsequent purpose of delivery of alerts and bi-directional communications (e.g., public health agencies notifying a specific group of service providers about an event.) The method and criteria by which individuals are added to a directory is a policy decision, which is out of scope for this construct. It uses the Integrating the Healthcare Enterprise (IHE) Personnel White Pages profile which provides access to basic directory information for identifying one or more recipients.

### 1.2 COPYRIGHT PERMISSIONS

#### COPYRIGHT NOTICE

© 2009 ANSI. This material may be copied without permission from ANSI only if and to the extent that the text is not altered in any fashion and ANSI's copyright is clearly noted.

IHE materials used in this document have been extracted from relevant copyrighted materials with permission of Integrating the Healthcare Enterprise (IHE) International. Copies of this standard may be retrieved from the IHE Web Site at [www.ihe.net](http://www.ihe.net).

### 1.3 REFERENCE DOCUMENTS

This section provides a list of key reference documents and background material.

A list of key reference documents and background material is provided in the table below. These documents can be retrieved from [www.hitsp.org](http://www.hitsp.org).

**Table 1-1 Reference Documents**

Reference Document	Document Description
<a href="#">HITSP Acronyms List</a>	Lists and defines the acronyms used in this document
<a href="#">HITSP Glossary</a>	Provides definitions for relevant terms used by HITSP documents
<a href="#">TN900 - Security and Privacy</a>	TN900 is a reference document that provides the overall context for use of the HITSP Security and Privacy constructs

### 1.4 CONFORMANCE

This section describes the conformance criteria, which are objective statements of requirements that can be used to determine if a specific behavior, function, interface, or code set has been implemented correctly.

#### 1.4.1 CONFORMANCE CRITERIA

In order to claim conformance to this construct specification, an implementation must satisfy all the requirements and mandatory statements listed in this specification, the associated HITSP Interoperability Specification, its associated construct specifications, as well as conformance criteria from the selected base and composite standards. A conformant system must also implement all of the required interfaces within the scope, subset or implementation option that is selected from the associated Interoperability Specification.

Claims of conformance may only be made for the overall HITSP Interoperability Specification or Capability with which this construct is associated.



#### 1.4.2 CONFORMANCE SCOPING, SUBSETTING AND OPTIONS

A HITSP Interoperability Specification must be implemented in its entirety for an implementation to claim conformance to the specification. HITSP may define the permissibility for interface scoping, subsetting or implementation options by which the specification may be implemented in a limited manner. Such scoping, subsetting and options may extend to associated constructs, such as this construct. This construct must implement all requirements within the selected scope, subset or options as defined in the associated Interoperability Specification to claim conformance.



## 2.0 TRANSACTION DEFINITION

### 2.1 CONTEXT OVERVIEW

This construct is intended to serve the purpose for identification of communication recipients for the subsequent purpose of delivery of alerts and bi-directional communications, e.g., public health agencies notifying a specific group of service providers about an event. The method and criteria by which individuals are added to a directory is a policy decision, which is out of scope for this construct.

This construct serves as the directory for identifying one or more recipients, and is intended to work with other constructs that provide the actual message that will need to be sent to the recipients. Directory Services provide query capabilities". "The query response provides all the attributes that the user has permission to retrieve. The most common query example is to obtain contact information for a particular individual, or group of individuals.

This construct uses the Integrating the Healthcare Enterprise (IHE) IT Infrastructure Technical Framework Personnel White Pages (PWP) profile, and should be used as the minimum requirements for ISO/TS 21091 which is an international standard under revision for Directory services for security, communications and identification of professionals and patients standard. ISO/TS 21091 extends the basic LDAP schema used in the IHE PWP profile.

*The text for the IHE Personnel White Pages profile begins here:*

The Personnel White Pages Profile specifies a method of finding directory information on the User Identities (user@realm) supplied by the Enterprise User Authentication (EUA) Integration Profile. This Profile assumes but does not define access controls and audit trails. The use of the PWP Profile is intended for use within a healthcare enterprise. Extension to support sharing of the PWP between healthcare enterprises is possible but not fully addressed by this profile. The PWP profile is the first step on an IHE roadmap that includes Digital Certificates, Encryption, Digital Signatures, Medical Credentials, and Roles.

The directory need not support Use Cases beyond healthcare operations (e.g., Human Resource Operations), but does not forbid a properly designed overlap with other Use Cases. This profile is not intended for patients or other individuals that are not acting as part of the human healthcare workforce.

*The text for the IHE Personnel White Pages profile ends here.*

The following scenarios are provided from the IHE PWP profile as examples of the application of this construct:

- A Clinical user logs into an acquisition device that is acting as a Personnel White Pages Consumer. The clinical application queries the Domain Name System (DNS) Server Interface to find the Personnel White Pages Directory. The clinical application then queries the Personnel White Pages Directory using the user's username and displays the user's full name with First Name, Middle, and Last
- The Clinical user acquires clinical data. The application queries the Personnel White Pages Directory for the user's demographics to include the user's organization identification to embed in the data record
- The Clinical User then needs to send this report by means of email to a colleague. The application allows the user to search the Personnel White Pages Directory for the destination user, and selects the destination user's email address
- The User reviews an existing clinical report and finds initials have been recorded in the report. The user system queries the Personnel White Pages Directory for the initials found in the report, and the system displays the displayable name(s)



### 2.1.1 TRANSACTION CONSTRAINTS

**Table 2-1 Transaction Constraints**

Constraint
No applicable constraints

### 2.1.2 INTERFACES

**Table 2-2 Interfaces**

Interface	Description	Used in Component/ Standard	Transaction/Content	T/C Optionality <sup>1</sup>
DNS Server	This interface has authoritative location information	IHE PWP	Find Personnel White Pages	R
Personnel White Pages Consumer	This interface has a use for information that can be found in the Personnel White Pages Directory	IHE PWP	Find Personnel White Pages	O
			Query Personnel White Pages	R
Personnel White Pages Directory	This interface has authoritative Personnel White Pages information on the human workforce members of the enterprise	IHE PWP	Query Personnel White Pages	R

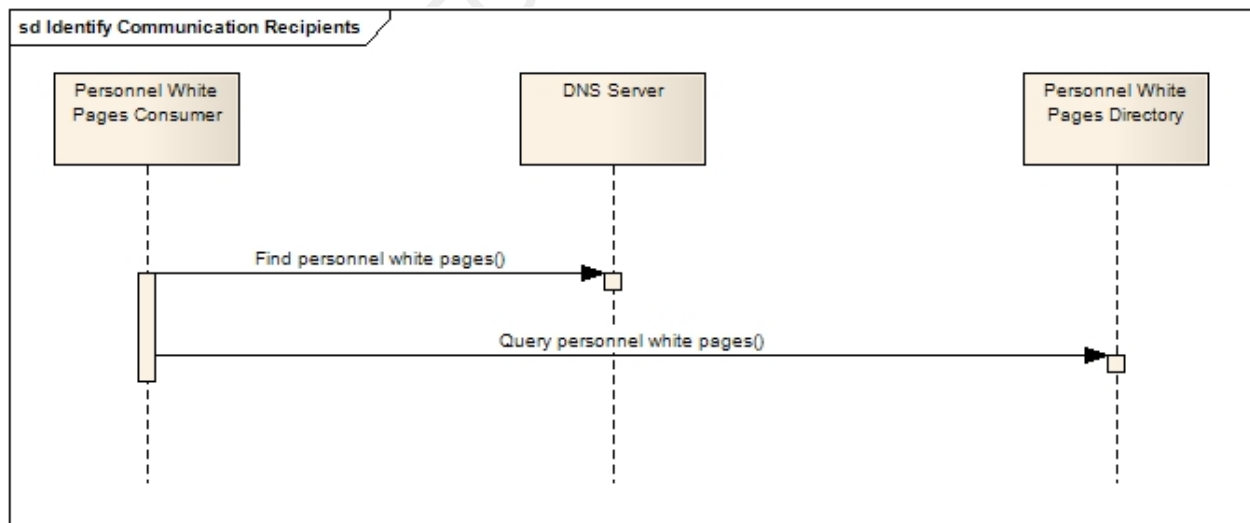
### Implementation Constraints

**Table 2-3 Interface and Transaction/Content Constraints**

Constraint Code	Constraint Description
No applicable transaction/content constraints	NA

### 2.1.3 INTERFACE INTERACTIONS

**Figure 2-1 Identify Communication Recipients Interaction**



The process flow is described in detail in Section 11.3 of the IHE-ITI-TF Rev 4, Personnel White Pages profile.

<sup>1</sup> Optionality = "R" for Required, "O" for Optional, or "C" for Conditional





## 2.1.4 PRE-CONDITIONS

**Table 2-4 Pre-conditions**

Pre-condition
A federated provider registry must exist
Federal and local policies and appropriate provider agreements regarding requirements to send certain messages must be in place and adhered to
It is expected that the security framework under which this Transaction operates is in accordance with the Interoperability Specification that references this construct. Therefore all applicable HITSP Security and Privacy constructs are implemented as required

### 2.1.4.1 PROCESS TRIGGERS

**Table 2-5 Process Triggers**

Process Trigger
Need to lookup Provider contact information

## 2.1.5 POST-CONDITIONS

**Table 2-6 Post-conditions**

Post-condition
Access control may prevent the return of the requested information/attributes (handled by the underlying standard)
Provider is identified and their information is provided
Provider is not found, and indication is provided that there is no directory entry

### 2.1.5.1 REQUIRED OUTPUT

**Table 2-7 Required Output**

Required Output	Format/Usage
Contact information for Provider	Per IHE PWP
Indication is provided if there is no directory entry	Per IHE PWP

## 2.1.6 DATA FLOWS

No applicable data flow is identified.

## 2.2 LIST OF HITSP CONSTRUCTS

**Table 2-8 List of HITSP Constructs**

Construct Name	Description	Transaction/Content
No applicable HITSP constructs		

### 2.2.1 CONSTRUCT DEPENDENCIES

**Table 2-9 Construct Dependencies**

Construct	Depends On (Name of Component that it depends on)	Dependency Type (Pre-condition, post-condition, general)	Purpose (Reason for this dependency)
No applicable HITSP construct dependencies			



## 2.2.2 ADDITIONAL CONSTRAINTS ON REQUIRED CONSTRUCTS

**Table 2-10 Additional Constraints on Required Constructs**

Data Element	Construct	Constraint	Constraint Type (Pre-condition, post-condition, general)	Purpose (Reason for this constraint)
No additional constraints for HITSP constructs				

## 2.3 **STANDARDS**

### 2.3.1 REGULATORY GUIDANCE

**Table 2-11 Regulatory Guidance**

Regulation	Description
No applicable regulatory guidance	

### 2.3.2 SELECTED STANDARDS

**Table 2-12 Selected Standards**

Standard	Description
Integrating the Healthcare Enterprise (IHE) IT Infrastructure Technical Framework, Revision 4.0 or later, Personnel White Pages profile	The Personnel White Pages (PWP) Profile provides access to basic directory information on human workforce members to other workforce members within the enterprise. This information has broad use among many clinical and non-clinical applications across the healthcare enterprise. This Personnel White Pages Profile specifies a method of finding directory information on the User Identities (user@realm) supplied by the Enterprise User Authentication (EUA) Integration Profile. For more information visit <a href="http://www.ihe.net">www.ihe.net</a>

### 2.3.3 INFORMATIVE REFERENCE STANDARDS

**Table 2-13 Informative Reference Standards**

Standard	Description
International Organization for Standardization (ISO) Health informatics -- Directory services for security, communications and identification of professionals and patients, Technical Specification #21091	Defines minimal specifications for directory services for healthcare using the X.500 framework. This Technical Specification provides the common directory information and services needed to support the secure exchange of healthcare information over public networks. It addresses the health directory from a community perspective in anticipation of supporting inter-enterprise, inter-jurisdiction and international healthcare communications. ISO/TS 21091:2005 also supports directory services aiming to support identification of health professionals and organizations and the patients/consumers. The latter services include aspects sometimes referred to as master patient indices. The healthcare directory will only support standard LDAP Client searches. Specific implementation guidance, search criteria and support are out of scope of this document. For more information visit <a href="http://www.iso.org">www.iso.org</a>



### 3.0 APPENDIX

The following sections include relevant materials referenced throughout this document.

No additional information at this time.



## 4.0 DOCUMENT UPDATES

### 4.1 DECEMBER 10, 2008

The changes in this construct address the following comments received during the Public Comment and Inspection Testing period (September 29 – October 24, 2008).

- 5548

Minor editorial changes were made to this construct.

### 4.2 DECEMBER 18, 2008

Upon approval by the HITSP Panel on December 18, 2008, this document is now Released for Implementation.

### 4.3 JUNE 30, 2009

Minor editorial changes were made to this document. Boilerplate text was removed for simplification. The term “actor” was replaced with “interface”.

### 4.4 JULY 8, 2009

Upon approval by the HITSP Panel on July 8, 2009, this document is now Released for Implementation.

