

HITSP Administrative Transport to Health Plan Service Collaboration

HITSP/SC114



Healthcare Information Technology Standards Panel

Submitted to:

Healthcare Information Technology Standards Panel

Submitted by:

Security, Privacy and Infrastructure Tiger Team



DOCUMENT CHANGE HISTORY

Version Number	Description of Change	Name of Author	Date Published
0.0.1	Review Copy	Security, Privacy and Infrastructure Tiger Team	June 30, 2009
1.0	Released for Implementation	Security, Privacy and Infrastructure Tiger Team	July 8, 2009

COPYRIGHT NOTICE

© 2009 ANSI. This material may be copied without permission from ANSI only if and to the extent that the text is not altered in any fashion and ANSI's copyright is clearly noted.



TABLE OF CONTENTS

1.0	INTRODUCTION	5
1.1	Service Collaboration Overview and Scope	5
1.2	Service Collaboration Invocation	5
1.3	External View (i.e., "black box" diagram)	6
1.3.1	Service Collaboration Source Constructs	6
1.4	Internal View Diagram with Sequencing (i.e., "white box" diagram)	6
1.4.1	Interface: Request Administrative Transport to Health Plan Internal View	7
1.4.1.1	Sequence Details	7
1.4.2	interface: Respond to Administrative Request to Health Plan	8
1.4.2.1	Sequence Details	8
2.0	DOCUMENT UPDATES	9
2.1	June 30, 2009	9
2.2	July 8, 2009	9



FIGURES AND TABLES

Figure 1-1 Administrative Transport to Health Plan External View Diagram	6
Figure 1-2 Request Administrative Transport to Health Plan Internal View	7
Figure 1-3 Respond to Administrative Request to Health Plan Internal View	8
Table 1-1 Service Collaboration Transactions and Data	5
Table 1-2 List of Constructs	6
Table 1-3 Request Administrative Transport to Health Plan – Pre-conditions	7
Table 1-4 Request Administrative Transport to Health Plan – Sequence of Constructs	7
Table 1-5 Request Administrative Transport to Health Plan – Post-conditions	7
Table 1-6 Respond Administrative Transport to Health Plan – Pre-conditions	8
Table 1-7 Respond Administrative Transport to Health Plan – Sequence of Constructs	8
Table 1-8 Respond Administrative Transport to Health Plan – Post-conditions	8



1.0 INTRODUCTION

1.1 SERVICE COLLABORATION OVERVIEW AND SCOPE

The Administrative Transport to Health Plan Service Collaboration provides the transport mechanism for conducting administrative transactions with health plans. This Service Collaboration utilizes:

- HITSP/T17 Secure Communications Channel as a pre-condition
- HITSP/SC109 Security Audit Service Collaboration
- HITSP/SC108 Access Control Service Collaboration

For more information about the underlying capabilities, pre-conditions, post-conditions, data flows and other detailed information, please refer to the constructs that are composed by this Service Collaboration.

The Service Collaboration document illustrates one internal view diagram and sequence table for each service interface. The diagrams are descriptive and the sequences are not mandatory. They may be affected by policy, chosen architecture, and implementation details. Conformance is measured against the underlying constructs.

1.2 SERVICE COLLABORATION INVOCATION

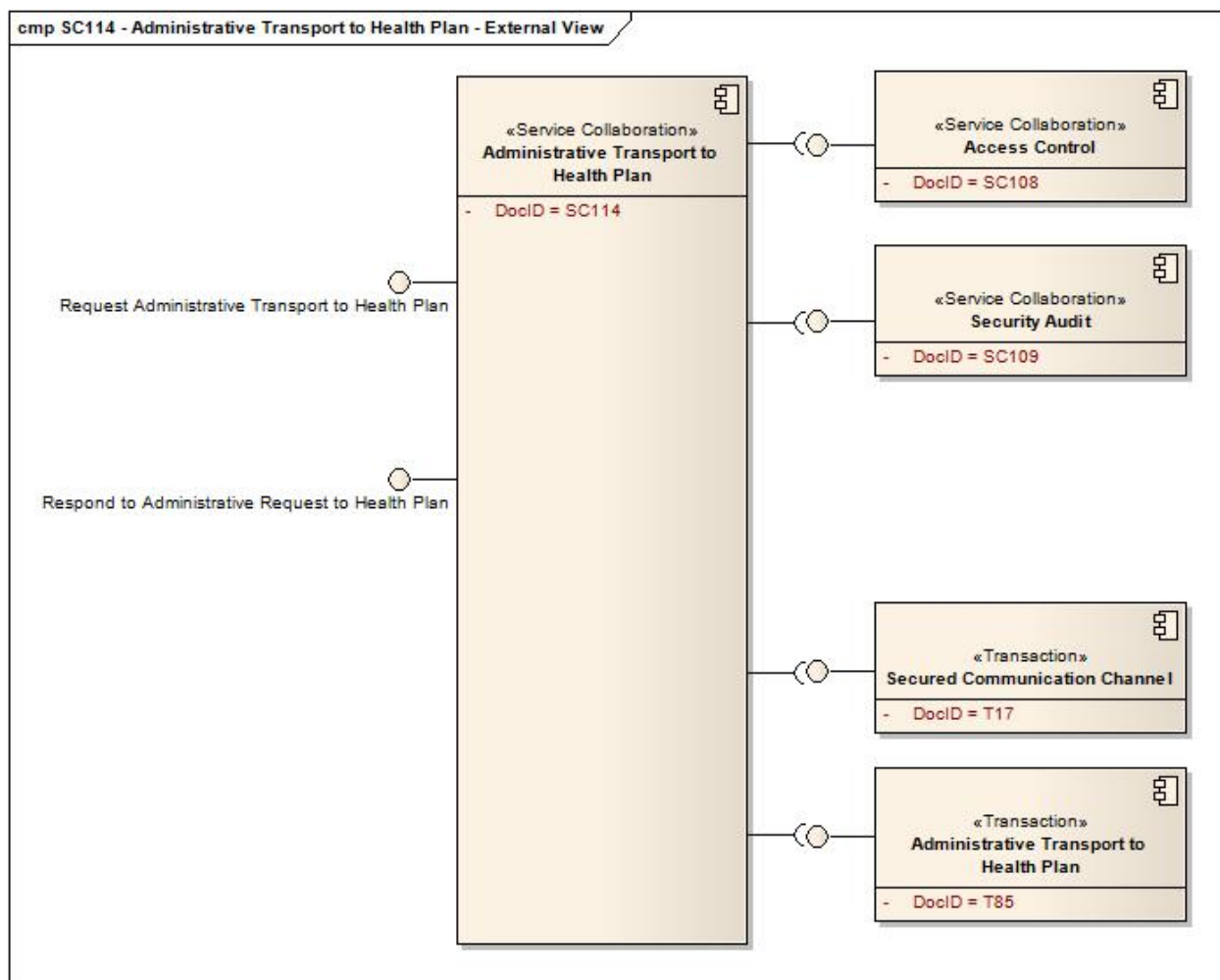
Table 1-1 Service Collaboration Transactions and Data

Service Collaboration	Service Collaboration description	Interface
HITSP/SC114	Provides the ability to request an administrative transport transaction to a Health Plan.	Request Administrative Transport to Health Plan
HITSP/SC114	Provides the ability to respond to a request for administrative transport transaction to health plan.	Respond to Administrative Request to Health Plan



1.3 EXTERNAL VIEW (i.e., “black box” diagram)

Figure 1-1 Administrative Transport to Health Plan External View Diagram



1.3.1 SERVICE COLLABORATION SOURCE CONSTRUCTS

Table 1-2 List of Constructs

Construct
HITSP/SC108 - Access Control Service Collaboration
HITSP/SC109 - Security Audit Collaboration
HITSP/T17 - Secured Communication Channel
HITSP/T85 - Administrative Transport to Health Plan

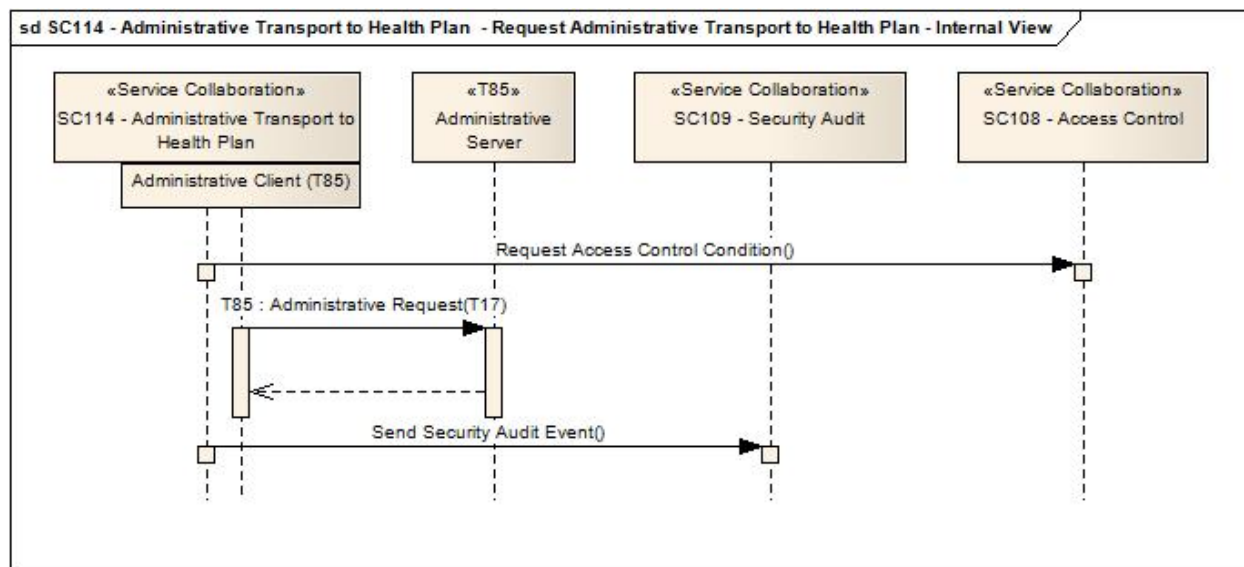
1.4 INTERNAL VIEW DIAGRAM WITH SEQUENCING (i.e., “white box” diagram)

There is one example diagram included for each service interface. The diagrams are descriptive and the sequences are not mandatory. They may be affected by policy, chosen architecture, and implementation details. Conformance is measured against the underlying constructs.



1.4.1 INTERFACE: REQUEST ADMINISTRATIVE TRANSPORT TO HEALTH PLAN INTERNAL VIEW

Figure 1-2 Request Administrative Transport to Health Plan Internal View



1.4.1.1 SEQUENCE DETAILS

Table 1-3 Request Administrative Transport to Health Plan – Pre-conditions

Pre-condition	Uses SC, T, TP or C	Interface	Purpose
None			

Table 1-4 Request Administrative Transport to Health Plan – Sequence of Constructs

Step Number	Uses SC, T, TP or C	Interface	Purpose
1	HITSP/SC108 - Access Control	Request Access Control Decision	If required by organizational and mutual agreed upon policies, perform access controls to ensure that the payload in the request can be shared with administrative server
2	HITSP/T17 - Secured Communication Channel	Secure Node	A secure communications channel must be open in order to protect the confidentiality, authenticity and integrity of the information being transmitted
3	HITSP/T85 - Administrative Transport to Health Plan	Administrative Client	Administrative client initiates a request and receives a response from Administrative Server
4	HITSP/SC109 - Security Audit	Send Security Audit Event	Send an audit event to the audit record repository

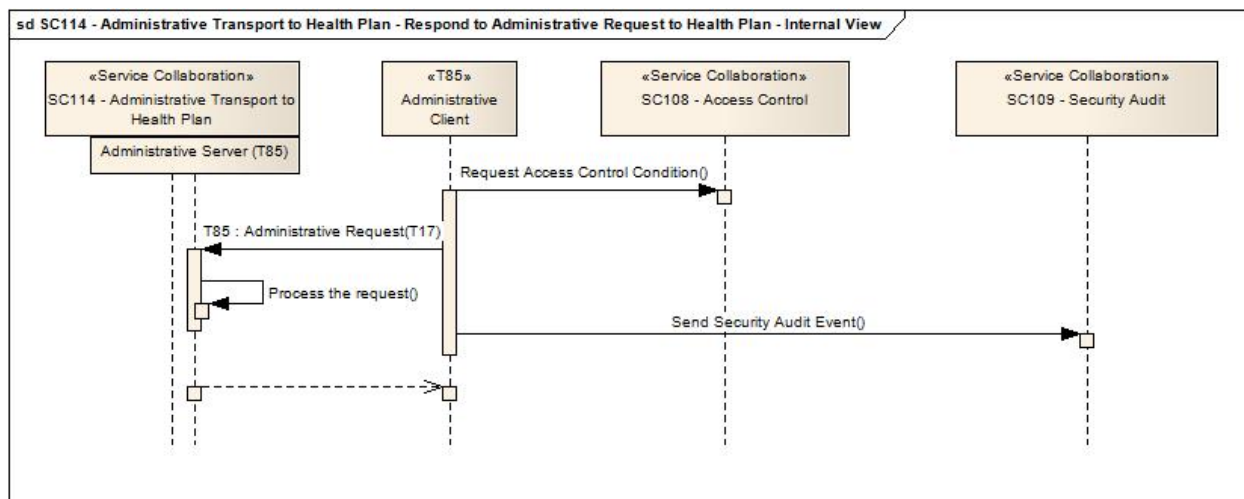
Table 1-5 Request Administrative Transport to Health Plan – Post-conditions

Post-condition	Uses SC, T, TP or C	Interface	Purpose
None			



1.4.2 INTERFACE: RESPOND TO ADMINISTRATIVE REQUEST TO HEALTH PLAN

Figure 1-3 Respond to Administrative Request to Health Plan Internal View



1.4.2.1 SEQUENCE DETAILS

Table 1-6 Respond Administrative Transport to Health Plan – Pre-conditions

Pre-condition	Uses SC, T, TP or C	Interface	Purpose
None			

Table 1-7 Respond Administrative Transport to Health Plan – Sequence of Constructs

Step Number	Uses SC, T, TP or C	Interface	Purpose
1	HITSP/T17 - Secure Communications Channel	Secure Node	A secure communications channel is open in order to protect the confidentiality, authenticity and integrity of the information being transmitted
2	HITSP/T85 - Administrative Transport to Health Plan	Administrative Server	Administrative server receives a request from the Administrative Client
3	HITSP/SC108 - Access Control	Request Access Control Decision	If required by organizational and mutual agreed upon policies, perform access controls to ensure whether the request is authorized to be processed
4	n/a (Loopback)	Internal Processing	Process the request from the administrative client
5	HITSP/T85 - Administrative Transport to Health Plan	Administrative Server	The administrative server returns the response to the administrative client
6	HITSP/SC109 - Security Audit	Send Security Audit Event	Send an audit event to the audit record repository

Table 1-8 Respond Administrative Transport to Health Plan – Post-conditions

Post-condition	Uses SC, T, TP or C	Interface	Purpose
None			



2.0 DOCUMENT UPDATES

The following sections provide the history of all changes made to this document.

2.1 JUNE 30, 2009

No changes. This is the first published version of the document.

2.2 JULY 8, 2009

Upon approval by the HITSP Panel on July 8, 2009, this document is now Released for Implementation.

