

# HITSP Query for Existing Data Service Collaboration

---

HITSP/SC113



Healthcare Information Technology Standards Panel

*Submitted to:*

**Healthcare Information Technology Standards Panel**

*Submitted by:*

**Security, Privacy and Infrastructure Domain Technical Committee  
(Formerly Security and Privacy Technical Committee)**



## DOCUMENT CHANGE HISTORY

Version Number	Description of Change	Name of Author	Date Published
0.0.1	Review Copy	Security, Privacy and Infrastructure Tiger Team	June 30, 2009
1.0	Released for Implementation	Security, Privacy and Infrastructure Tiger Team	July 8, 2009
1.0.1	Review Copy	Security, Privacy and Infrastructure Domain Technical Committee	January 18, 2010
1.1	Released for Implementation	Security, Privacy and Infrastructure Domain Technical Committee	January 25, 2010

### COPYRIGHT NOTICE

© 2010 ANSI. This material may be copied without permission from ANSI only if and to the extent that the text is not altered in any fashion and ANSI's copyright is clearly noted.



## TABLE OF CONTENTS

<b>1.0</b>	<b>INTRODUCTION.....</b>	<b>5</b>
1.1	Service Collaboration Overview and Scope .....	5
1.2	Service Collaboration Invocation .....	5
1.3	External View (i.e., “Black Box” Diagram) .....	6
1.3.1	Service Collaboration Source Constructs.....	7
1.4	Internal View Diagram with Sequencing (i.e., “White Box” Diagram).....	8
1.4.1	Interface: Request Existing Patient Data.....	8
1.4.1.1	Sequence Details .....	8
1.4.2	Interface: Respond to Existing Patient Data.....	9
1.4.2.1	Sequence Details .....	9
<b>2.0</b>	<b>DOCUMENT UPDATES .....</b>	<b>10</b>
2.1	June 30, 2009.....	10
2.2	July 8, 2009 .....	10
2.3	January 18, 2010.....	10
2.4	January 25, 2010.....	10



## FIGURES AND TABLES

Figure 1-1 Query for Existing Data External View Diagram.....	6
Figure 1-2 Request Existing Patient Data Internal View.....	8
Figure 1-3 Respond to Existing Patient Data Internal View.....	9
Table 1-1 Service Collaboration Transactions and Data .....	5
Table 1-2 List of Constructs .....	7
Table 1-3 Sequence of Constructs – Pre-conditions .....	8
Table 1-4 Sequence of Constructs .....	8
Table 1-5 Sequence of Constructs – Post-conditions.....	8
Table 1-6 Sequence of Constructs – Pre-conditions .....	9
Table 1-7 Sequence of Constructs .....	9
Table 1-8 Sequence of Constructs – Post-conditions.....	9



## 1.0 INTRODUCTION

### 1.1 SERVICE COLLABORATION OVERVIEW AND SCOPE

The HITSP Query for Existing Data Service Collaboration provides the capability to query and retrieve data from another clinical system, and the capability to respond to the same queries. The Service Collaboration applies the necessary Security and Privacy constructs. The Service Collaboration supports all the queries found in HITSP/TP21 Query for Existing Data, including:

- Vital Signs
- Problems and Allergies
- Diagnostic Data
- Medications
- Immunizations
- Professional Services

For more information about the underlying Capabilities, pre-conditions, post-conditions, data flows and other detailed information, please refer to the constructs that are used by this Service Collaboration.

The Service Collaboration document illustrates one internal view diagram and sequence table for each service interface. The diagrams are descriptive and the sequences are not mandatory. They may be affected by policy, chosen architecture, and implementation details. Conformance is measured against the underlying constructs.

### 1.2 SERVICE COLLABORATION INVOCATION

**Table 1-1 Service Collaboration Transactions and Data**

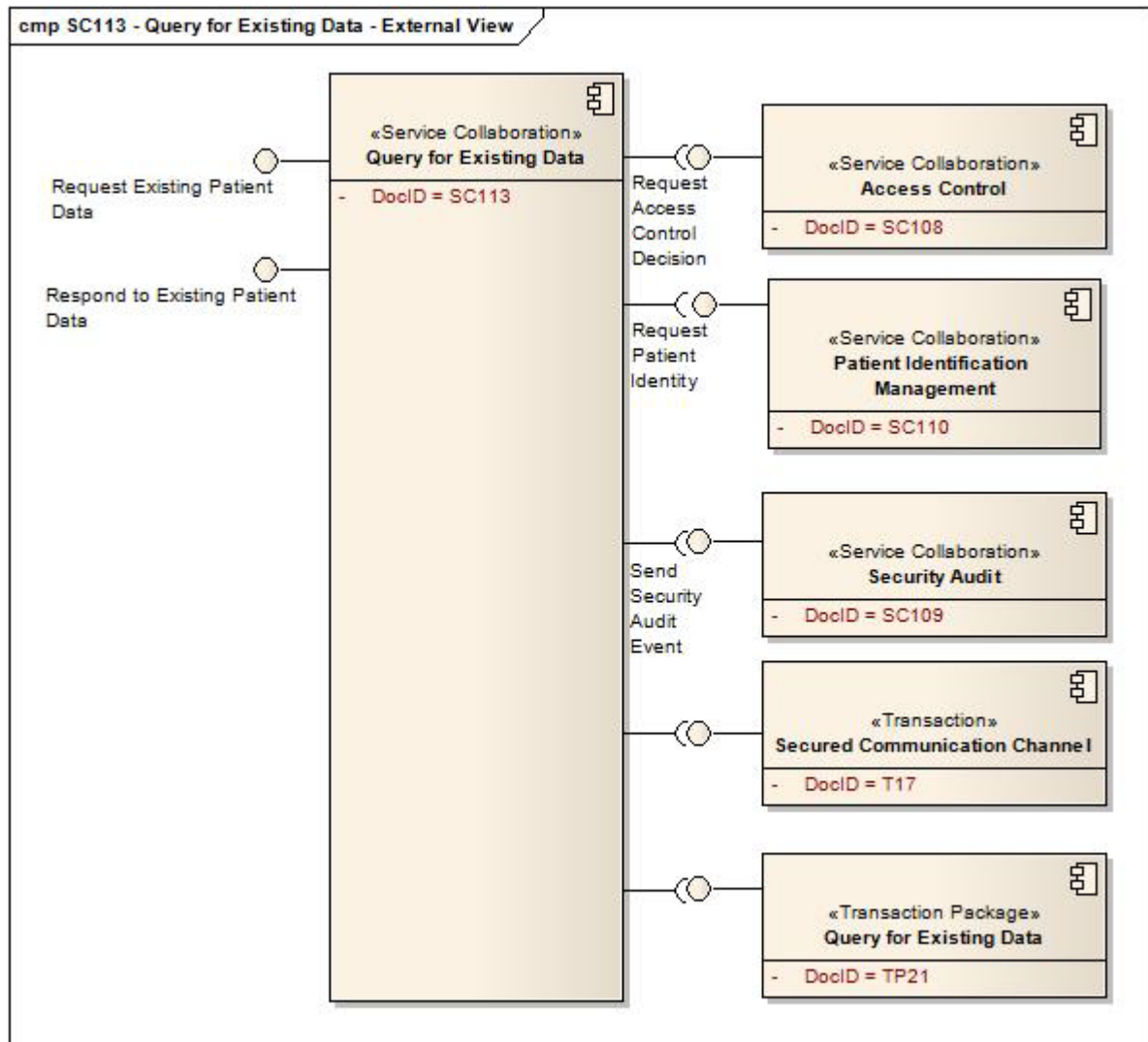
Service Collaboration	Service Collaboration Description	Interface	Optionality
HITSP/SC113 - Query for Existing Data	Requests existing patient data from another clinical system	Request Existing Patient Data	R
HITSP/SC113 - Query for Existing Data	Provides data for another clinical system	Respond to Existing Patient Data	R

Optionality Legend: "R" for Required, "O" for Optional, or "C" for Conditional



### 1.3 EXTERNAL VIEW (i.e., “Black Box” Diagram)

Figure 1-1 Query for Existing Data External View Diagram



### 1.3.1 SERVICE COLLABORATION SOURCE CONSTRUCTS

**Table 1-2 List of Constructs**

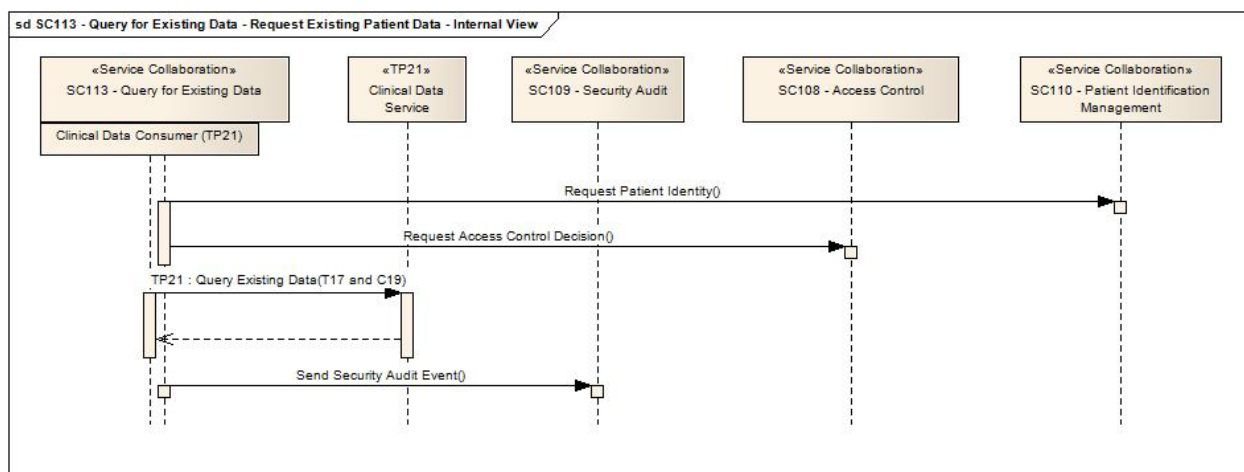
Construct	Description
HITSP/SC108 - Access Control	The HITSP Access Control Service Collaboration provides the mechanism for security authorizations which control the enforcement of security policies including: role-based access control, entity based access control, context based access control, and the execution of consent directives
HITSP/SC109 - Security Audit	The HITSP Security Audit Service Collaboration describes the mechanism to record security relevant events in support of policy, regulation, or risk analysis. It also provides the mechanism to determine the record format to support analytical reports that are needed
HITSP/SC110 - Patient Identification Management	The HITSP Patient Identification Management Service Collaboration provides the ability to lookup and/or cross-reference patient identities
HITSP/T17 - Secured Communication Channel	The HITSP Secured Communication Channel Transaction provides the mechanisms to ensure the authenticity, integrity, and confidentiality of transmissions, and the mutual trust between communicating parties. Its objectives include providing: mutual node authentication to assure each node of the others' identity; transmission integrity to guard against improper information modification or destruction while in transit; and transmission confidentiality to ensure that information in transit is not disclosed to unauthorized individuals, entities, or processes
HITSP/TP21 - Query for Existing Data	The HITSP Query for Existing Data Transaction Package is based on the IHE Query for Existing Data Integration Profile (QED) which supports dynamic queries for clinical data, including vital signs, problems, medications, immunizations, diagnostic results, procedures and visit history. A wide variety of systems often needs access to dynamic clinical information stored and maintained in an EMR system or other clinical data repository. The construct makes the information widely available to other systems within and across enterprises to support provision of better clinical care



## 1.4 INTERNAL VIEW DIAGRAM WITH SEQUENCING (i.e., “White Box” Diagram)

### 1.4.1 INTERFACE: REQUEST EXISTING PATIENT DATA

Figure 1-2 Request Existing Patient Data Internal View



#### 1.4.1.1 SEQUENCE DETAILS

Table 1-3 Sequence of Constructs – Pre-conditions

Pre-condition	Uses SC, T, TP or C	Interface	Purpose
None			

Table 1-4 Sequence of Constructs

Step Number	Uses SC, T, TP or C	Interface	Purpose
1	HITSP/SC110 - Patient Identification Management	Request Patient Identification	To resolve the patient identity into the identity that the Clinical Data Service requires
2	HITSP/SC108 - Access Control	Request Access Control Decision	To ensure that the user of this Service Collaboration has the right to use the HITSP/TP21 Query for Existing Data for this patient and this purpose
3	HITSP/T17 - Secured Communication Channel	Secure Node	To open a secured communication channel for HITSP/TP21 Query for Existing Data to transmit clinical data
4	HITSP/C19 - Entity Identity Assertion		To provide the identity and attributes about the requestor of HITSP/TP21 Query for Existing Data
5	HITSP/TP21 - Query for Existing Data	Clinical Data Consumer	To request and receive the existing data
6	HITSP/SC109 - Security Audit	Send Security Audit Event	To record the success or failure of the relevant information about the HITSP/TP21 Query for Existing Data

Table 1-5 Sequence of Constructs – Post-conditions

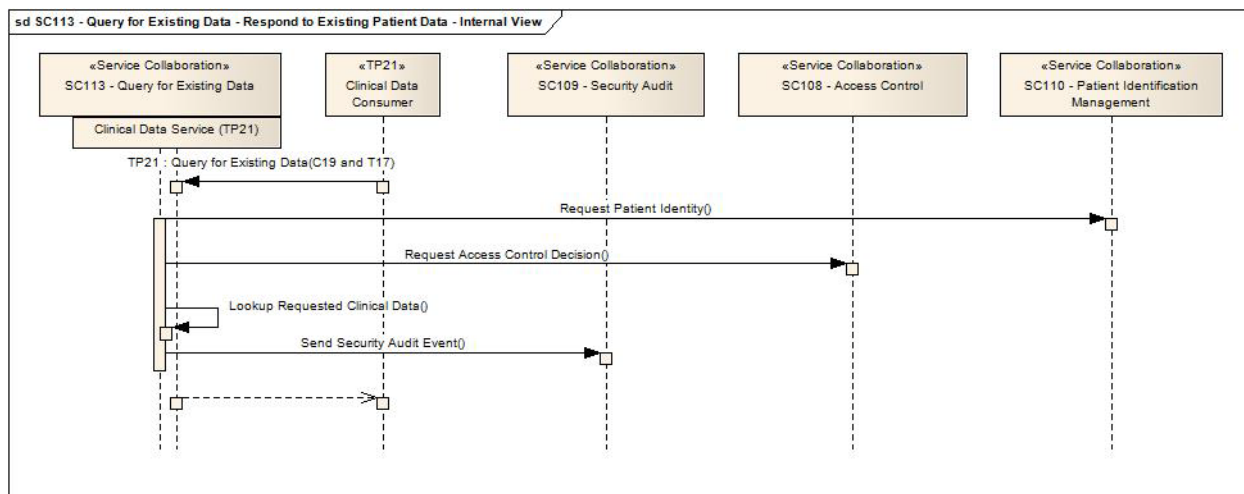
Post-condition	Uses SC, T, TP or C	Interface	Purpose
None			





## 1.4.2 INTERFACE: RESPOND TO EXISTING PATIENT DATA

**Figure 1-3 Respond to Existing Patient Data Internal View**



### 1.4.2.1 SEQUENCE DETAILS

**Table 1-6 Sequence of Constructs – Pre-conditions**

Pre-condition	Uses SC, T, TP or C	Interface	Purpose
None			

**Table 1-7 Sequence of Constructs**

Step Number	Uses SC, T, TP or C	Interface	Purpose
1	HITSP/T17 - Secured Communication Channel	Secure Node	To receive a secured communication channel for HITSP/TP21 Query for Existing Data to transmit clinical data
2	HITSP/C19 - Entity Identity Assertion		To receive the identity and attributes about the requestor of the HITSP/TP21 Query for Existing Data
3	HITSP/TP21 - Query for Existing Data	Depends on payload.	Receive the request for existing data
4	HITSP/SC110 - Patient Identification Management	Request Patient Identification	If required, resolve the patient identity into the identity that the Clinical Data Service requires
5	HITSP/SC108 - Access Control	Request Access Control Decision	To ensure that the user of this Service Collaboration has the right to use the data for this patient and this purpose
6	(Internal)		Lookup the requested data
7	HITSP/SC109 - Security Audit	Send Security Audit Event	To record the success or failure of the relevant information about the HITSP/TP21 Query for Existing Data
8	HITSP/TP21 - Query for Existing Data	Depends on payload.	Return the requested data

**Table 1-8 Sequence of Constructs – Post-conditions**

Post-condition	Uses SC, T, TP or C	Interface	Purpose
None			



## 2.0 DOCUMENT UPDATES

The following sections provide the history of all changes made to this document.

### 2.1 JUNE 30, 2009

No changes. This is the first published version of the document.

### 2.2 JULY 8, 2009

Upon approval by the HITSP Panel on July 8, 2009, this document is now Released for Implementation.

### 2.3 JANUARY 18, 2010

Editorial updates:

- Fixed interface “Request Existing Data” to “Request Existing Patient Data”
- Figure 1-3 fixed to read “Respond to Existing Patient Data Internal View”
- Figure 1-3 updated for consistency with the sequence table
- Updated document to HITSP Service Collaboration Template Version 1.0

### 2.4 JANUARY 25, 2010

Upon approval by the HITSP Panel on January 25, 2010, this document is now Released for Implementation.

