

# HITSP Retrieve Form for Data Capture Transaction Package

---

HITSP/TP50



Healthcare Information Technology Standards Panel

*Submitted to:*

**Healthcare Information Technology Standards Panel**

*Submitted by:*

**Security, Privacy and Infrastructure Domain Technical Committee  
(Formerly Security and Privacy Technical Committee)**



## DOCUMENT CHANGE HISTORY

Version Number	Description of Change	Name of Author	Date Published
1.1	Ready for Public Comment	Biosurveillance Technical Committee	September 12, 2006
1.2	Ready for Implementation Testing	Biosurveillance Technical Committee	October 20, 2006
2.0	Released for Implementation	Population Health Technical Committee	May 11, 2007
2.1	Released for Implementation	Population Health Technical Committee	December 13, 2007
2.1.1	Review Copy	Population Health Technical Committee	March 19, 2008
2.2	Released for Implementation	Population Health Technical Committee	March 27, 2008
	Template Updated to V2.4	Project Team	July 31, 2008
2.2.1	Review Copy	Security, Privacy, and Infrastructure Domain Technical Committee	August 20, 2008
2.3	Released for Implementation	Security, Privacy, and Infrastructure Domain Technical Committee	August 27, 2008
2.3.1	Review Copy	Security, Privacy, and Infrastructure Domain Technical Committee	December 10, 2008
2.4	Released for Implementation	Security, Privacy, and Infrastructure Domain Technical Committee	December 18, 2008
	Template V2.5	Project Team	June 30, 2009
2.4.1	Review Copy	Security, Privacy, and Infrastructure Domain Technical Committee	June 30, 2009
2.5	Released for Implementation	Security, Privacy, and Infrastructure Domain Technical Committee	July 8, 2009
2.5.1	Review Copy	Security, Privacy, and Infrastructure Domain Technical Committee	November 9, 2009
2.5.2	Review Copy	Security, Privacy, and Infrastructure Domain Technical Committee	January 18, 2010
3.0	Released for Implementation	Security, Privacy, and Infrastructure Domain Technical Committee	January 25, 2010



# TABLE OF CONTENTS

<b>1.0</b>	<b>INTRODUCTION.....</b>	<b>5</b>
1.1	Overview.....	5
1.2	Copyright Permissions.....	5
1.3	Reference Documents.....	5
1.4	Conformance .....	5
1.4.1	Conformance Criteria .....	5
1.4.2	Conformance Scoping, Subsetting and Options .....	5
<b>2.0</b>	<b>TRANSACTION PACKAGE DEFINITION.....</b>	<b>6</b>
2.1	Context Overview .....	6
2.1.1	Interfaces.....	6
2.1.2	Interface Interactions.....	7
2.1.3	Conditions and Assumptions.....	7
2.1.3.1	Required Output.....	7
2.1.4	Data Flows.....	7
2.2	List of HITSP Constructs .....	7
2.2.1	Construct Dependencies .....	8
2.2.2	Additional Constraints on Required Constructs.....	8
2.3	Standards .....	8
2.3.1	Regulatory Guidance.....	8
2.3.2	Selected Standards .....	8
2.3.3	Informative Reference Standards.....	8
<b>3.0</b>	<b>APPENDIX .....</b>	<b>9</b>
<b>4.0</b>	<b>DOCUMENT UPDATES .....</b>	<b>10</b>
4.1	December 13, 2007 .....	10
4.2	March 19, 2008.....	10
4.3	March 27, 2008.....	10
4.4	August 20, 2008 .....	10
4.5	August 27, 2008 .....	10
4.6	December 10, 2008.....	10
4.7	December 18, 2008 .....	11
4.8	June 30, 2009.....	11
4.9	July 8, 2009 .....	11
4.10	November 9, 2009 .....	11
4.11	January 18, 2010.....	11
4.12	January 25, 2010.....	11



## FIGURES AND TABLES

Figure 2-1 RFD Process Flow.....	7
Table 1-1 Reference Documents .....	5
Table 2-1 Interfaces .....	6
Table 2-2 Context.....	7
Table 2-3 Required Output.....	7
Table 2-4 List of HITSP Constructs .....	7
Table 2-5 Construct Dependencies .....	8
Table 2-6 Additional Constraints on Required Constructs.....	8
Table 2-7 Regulatory Guidance .....	8
Table 2-8 Selected Standards .....	8
Table 2-9 Informative Reference Standards .....	8



## 1.0 INTRODUCTION

### 1.1 OVERVIEW

The Health Information Technology Standards Panel (HITSP) Retrieve Form for Data Capture Transaction Package enables capture of supplemental data variables not typically maintained in an electronic health record, laboratory information system or more generally any local information system. This allows such local systems to retrieve a form specific to the identified need, such as a potential public health threat or supplemental data elements required for quality reporting that may not be available to the electronic health record.

### 1.2 COPYRIGHT PERMISSIONS

#### COPYRIGHT NOTICE

© 2010 ANSI. This material may be copied without permission from ANSI only if and to the extent that the text is not altered in any fashion and ANSI's copyright is clearly noted.

### 1.3 REFERENCE DOCUMENTS

A list of key reference documents and background material is provided in the table below. HITSP maintained reference documents can be retrieved from the [www.hitsp.org](http://www.hitsp.org) Web Site.

**Table 1-1 Reference Documents**

Reference Documents	Document Description
<a href="#">HITSP Acronyms List</a>	Lists and defines the acronyms used in this document
<a href="#">HITSP Glossary</a>	Provides definitions for relevant terms used by HITSP documents
<a href="#">TN900 – Security and Privacy</a>	TN900 is a reference document that provides the overall context for use of the HITSP Security and Privacy constructs

### 1.4 CONFORMANCE

This section describes the conformance criteria, which are objective statements of requirements that can be used to determine if a specific behavior, function, interface or code set has been implemented correctly.

#### 1.4.1 CONFORMANCE CRITERIA

In order to claim conformance to this construct specification, an implementation must satisfy all the requirements and mandatory statements listed in this specification, the associated HITSP Interoperability Specification or Capability, its associated construct specifications, as well as conformance criteria from the selected base and composite standards. A conformant system must also implement all of the required interfaces within the scope, subset or implementation option that is selected from the associated Interoperability Specification.

Claims of conformance may only be made for the overall HITSP Interoperability Specification or Capability with which this construct is associated.

#### 1.4.2 CONFORMANCE SCOPING, SUBSETTING AND OPTIONS

A HITSP Interoperability Specification or Capability must be implemented in its entirety for an implementation to claim conformance to the specification. HITSP may define the permissibility for interface scoping, subsetting or implementation options by which the specification may be implemented in a limited manner. Such scoping, subsetting and options may extend to associated constructs, such as this construct. This construct must implement all requirements within the selected scope, subset or options as defined in the associated Interoperability Specification or Capability to claim conformance.



## 2.0 TRANSACTION PACKAGE DEFINITION

### 2.1 CONTEXT OVERVIEW

The Retrieve Form for Data Capture Transaction Package enables data capture from within a user's clinical information system to help improve the workflow and timeliness of required reporting. Such functionality is useful, for example, in the context of public health where surveillance of reportable conditions typically requires reporting to laboratories and healthcare providers of defined conditions and test results. These reports include some information available in clinical or laboratory information systems, and also typically include a number of supplemental information variables specific to the reportable disease that require human input or computation from one or many systems.

In the context of quality, as a second example, the patient-level data collected from providers are sent for analysis and aggregation to compute the quality measures and to generate comparative reports. While the patient-level quality data may be provided from the local system, much of the information is often unavailable to the system generating the patient-level quality data. The HITSP Retrieve Form for Data Capture Transaction Package will enable the provider to capture the information not available in electronic format through supplemental data entry within the same clinical information system.

In both examples, along with the request for the form to capture supplemental information, one may also convey input, context and workflow clinical information data in a standardized format to allow the form manager to select and pre-populated the form content.

The selected standard is the Integrating the Healthcare Enterprise (IHE) IT Infrastructure Technical Framework (TF) Supplement, Retrieve Form for Data Capture (RFD) Integration Profile, August 10, 2009.

#### 2.1.1 INTERFACES

**Table 2-1 Interfaces**

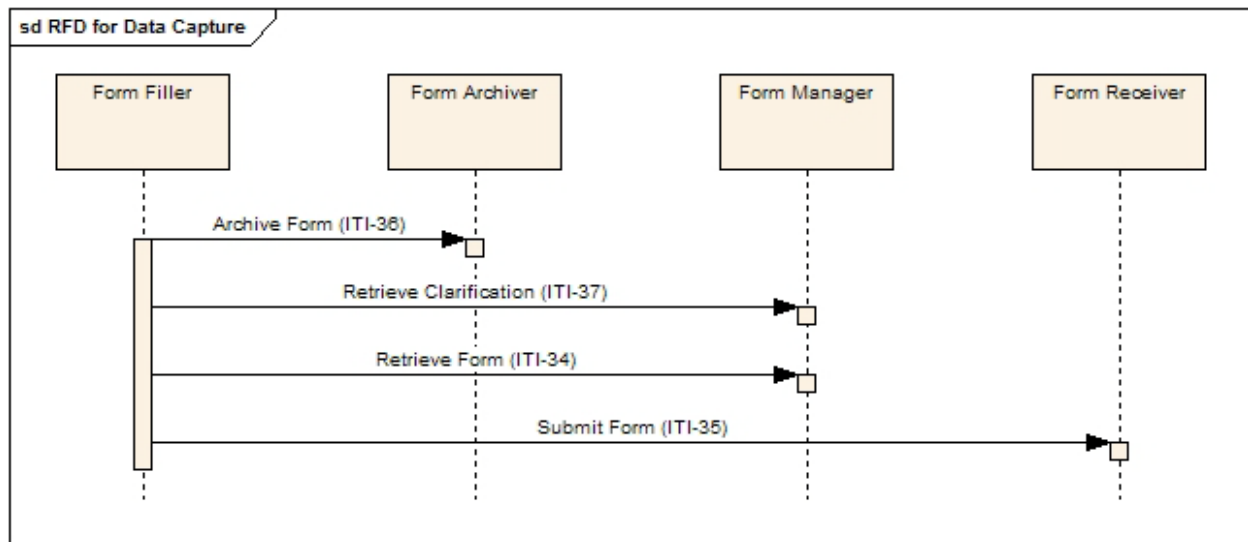
Interface	Description	Used in Component/Standard	Transaction/Content	T/C Optionality/ Conditions
Form Archiver	Responsible for receiving form instance data for archival purposes	IHE-ITI-TF RFD	Archive form	R
Form Filler	Responsible for retrieving a form from submitting form instance data to a Form Receiver. The mechanism by which a unique identification of a form is obtained is outside the scope of the Retrieve Form for Data Capture profile	IHE-ITI-TF RFD	Retrieve form	R
			Submit form	R
			Archive form	O
			Retrieve clarifications	O
Form Manager	Supplies a form based upon a request with unique form identification	IHE-ITI-TF RFD	Retrieve form	R
			Retrieve clarifications	R
Form Receiver	Receives form instance data	IHE-ITI-TF RFD	Submit form	R

Optionality Legend: "R" for Required, "O" for Optional, or "C" for Conditional



## 2.1.2 INTERFACE INTERACTIONS

Figure 2-1 RFD Process Flow



All process flows associated with this Transaction Package can be found in Section 17.4 of the IHE IT Infrastructure Technical Framework Retrieve Form for Data Capture Integration Profile.

## 2.1.3 CONDITIONS AND ASSUMPTIONS

Table 2-2 Context

Assumptions, Pre-Conditions, Post-Conditions, and Triggers	Type of Context
Data forms exist to capture data values of interest	Pre-condition
All applicable HITSP Security and Privacy constructs are implemented as required	Pre-condition
These data forms are compliant with this specification	Pre-condition
Data captured by the form is successfully transmitted to the form receiver	Post-condition

### 2.1.3.1 REQUIRED OUTPUT

Table 2-3 Required Output

Required Output	Format/Usage
No applicable required outputs	

## 2.1.4 DATA FLOWS

All data flows associated for this Transaction Package are specified in Section 17.4 of the IHE IT Infrastructure Technical Framework Retrieve Form for Data Capture Integration Profile.

## 2.2 LIST OF HITSP CONSTRUCTS

Table 2-4 List of HITSP Constructs

Construct Name	Description
No applicable constructs	



### 2.2.1 CONSTRUCT DEPENDENCIES

**Table 2-5 Construct Dependencies**

Construct	Depends On (Name of Component that it depends on)	Dependency Type (Pre-condition, Post-condition, general)	Purpose (Reason for this dependency)
No applicable construct dependencies			

### 2.2.2 ADDITIONAL CONSTRAINTS ON REQUIRED CONSTRUCTS

**Table 2-6 Additional Constraints on Required Constructs**

Constraint ID	Data Element	Construct	Constraint	Constraint Type (Pre-condition, Post-condition, general)	Purpose (Reason for this constraint)
No applicable constraints					

## 2.3 STANDARDS

### 2.3.1 REGULATORY GUIDANCE

**Table 2-7 Regulatory Guidance**

Regulation	Description
No applicable regulatory guidance	

### 2.3.2 SELECTED STANDARDS

**Table 2-8 Selected Standards**

Standard	Description
Integrating the Healthcare Enterprise (IHE) IT Infrastructure Technical Framework (TF) Supplement, Retrieve Form for Data Capture (RFD), Draft for Trial Implementation, August 10, 2009	The Retrieve Form for Data Capture Profile (RFD) provides a method for gathering data within a user's current application to meet the requirements of an external system. RFD supports the retrieval of forms from a form source, display and completion of a form, and return of instance data from the display application to the source application. The latest version of the IHE Technical Framework is available at <a href="http://www.ihe.net">www.ihe.net</a>

### 2.3.3 INFORMATIVE REFERENCE STANDARDS

**Table 2-9 Informative Reference Standards**

Standard	Reason for Use
No applicable informative reference standards	





### 3.0 APPENDIX

The following sections include relevant materials referenced throughout this document.

No additional information at this time.



## 4.0 DOCUMENT UPDATES

The following sections provide the history of all changes made to this document.

### 4.1 DECEMBER 13, 2007

Upon approval by the HITSP Panel on December 13, 2007, this document is now Released for Implementation.

### 4.2 MARCH 19, 2008

The following changes have been made to the construct:

- Updated overview language to generalize the use to extend beyond public health
- Added process trigger statement
- Updated Figures 1.2-1 and 2.1.3-1

### 4.3 MARCH 27, 2008

Upon approval by the HITSP Panel on March 27, 2008, this document is now Released for Implementation.

### 4.4 AUGUST 20, 2008

This document has been modified to reflect the updated HITSP approach to categorizing standards as Regulatory Guidance, Selected Standards, and Informative References.

The following standard has been added as selected:

- Integrating the Healthcare Enterprise (IHE) IT Infrastructure Technical Framework (TF) 2007 – 2008 Supplement, Retrieve Form for Data Capture (RFD)

The following standard has been added as an informative reference:

- Integrating the Healthcare Enterprise (IHE) IT Infrastructure Technical Framework (ITI-TF) Revision 4.0

The following standard has been removed:

- Integrating the Healthcare Enterprise (IHE) IT Infrastructure Technical Framework (ITI-TF) Revision 3.0

### 4.5 AUGUST 27, 2008

Upon approval by the HITSP Panel on August 27, 2008, this document is now Released for Implementation.

### 4.6 DECEMBER 10, 2008

Minor editorial changes were made to this construct.

This document has been edited to incorporate minor version updates of the underlying standard, IHE RFD.



#### **4.7 DECEMBER 18, 2008**

Upon approval by the HITSP Panel on December 18, 2008, this document is now Released for Implementation.

#### **4.8 JUNE 30, 2009**

Minor editorial changes were made to this document. Removed boilerplate text for simplification. The term “actor” was replaced with “interface”.

#### **4.9 JULY 8, 2009**

Upon approval by the HITSP Panel on July 8, 2009, this document is now Released for Implementation.

#### **4.10 NOVEMBER 9, 2009**

Update to the latest version of the IHE RFD Supplement dated August 10, 2009.

Editorial update to remove language in preconditions which was pertinent only to HITSP/IS02 Biosurveillance.

#### **4.11 JANUARY 18, 2010**

Updated to HITSP Transaction Package Template Version 2.7.

Removal of IHE IT Infrastructure Technical Framework (ITI-TF) Revision 4.0 from Table 2-9 Informative Reference Standards.

#### **4.12 JANUARY 25, 2010**

Upon approval by the HITSP Panel on January 25, 2010, this document is now Released for Implementation.

